
Product Name: GDF6 Rabbit Polyclonal Antibody**Catalog #: APRab00530**

For research use only.

Summary

Description	Rabbit polyclonal Antibody
Host	Rabbit
Application	WB,ELISA
Reactivity	Human,Mouse,Rat
Conjugation	Unconjugated
Modification	Unmodified
Isotype	IgG
Clonality	Polyclonal
Form	Liquid
Concentration	1mg/ml
Storage	Aliquot and store at -20°C (valid for 12 months). Avoid freeze/thaw cycles.
Shipping	Ice bags
Buffer	Liquid in PBS containing 50% glycerol, 0.5% protective protein and 0.02% sodium azide, pH 7.3.
Purification	Affinity Purification

Application

Dilution Ratio	WB 1:500-1:1000,ELISA 1:5000-1:20000
Molecular Weight	Calculated MW: 51 kDa; Observed MW: 51 kDa

Antigen Information

Gene Name	GDF6
Alternative Names	GDF6; GDF16; Growth/differentiation factor 6; GDF-6; Growth/differentiation factor 16
Gene ID	392255
SwissProt ID	Q6KF10
Immunogen	The antiserum was produced against synthesized peptide derived from the Internal region of human GDF6. AA range:311-360

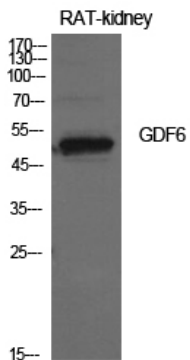
Background

Growth factor that controls proliferation and cellular differentiation in the retina and bone formation.

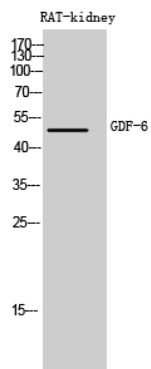
Research Area

Signal Transduction

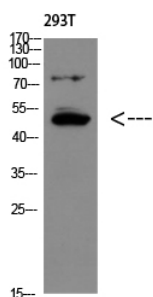
Image Data



Western blot analysis of GDF6 in rat kidney lysates using GDF6 antibody.



Western blot analysis of GDF6 in rat kidney lysates using GDF6 antibody.



Western blot analysis of GDF6 in 293T lysates using GDF6 antibody.