

---

**Product Name: Mannose Receptor Rabbit Polyclonal Antibody****Catalog #: APRab00529**

For research use only.

**Summary**

<b>Description</b>	Rabbit polyclonal Antibody
<b>Host</b>	Rabbit
<b>Application</b>	WB,IHC,ELISA
<b>Reactivity</b>	Human
<b>Conjugation</b>	Unconjugated
<b>Modification</b>	Unmodified
<b>Isotype</b>	IgG
<b>Clonality</b>	Polyclonal
<b>Form</b>	Liquid
<b>Concentration</b>	1mg/ml
<b>Storage</b>	Aliquot and store at -20°C (valid for 12 months). Avoid freeze/thaw cycles.
<b>Shipping</b>	Ice bags
<b>Buffer</b>	Liquid in PBS containing 50% glycerol, 0.5% protective protein and 0.02% sodium azide, pH 7.3.
<b>Purification</b>	Affinity Purification

**Application**

<b>Dilution Ratio</b>	WB 1:500-1:1000,IHC 1:50-1:100,ELISA 1:5000-1:20000
<b>Molecular Weight</b>	Calculated MW: 166 kDa; Observed MW: 170 kDa

**Antigen Information**

<b>Gene Name</b>	MRC1 MRC1; CLEC13D; CLEC13DL; MRC1L1; Macrophage mannose receptor 1; MMR; C-type lectin
<b>Alternative Names</b>	domain family 13 member D; C-type lectin domain family 13 member D-like; Macrophage mannose receptor 1-like protein 1; CD antigen CD206
<b>Gene ID</b>	4360
<b>SwissProt ID</b>	P22897
<b>Immunogen</b>	The antiserum was produced against synthesized peptide derived from the Internal region of human MRC1. AA range:341-390

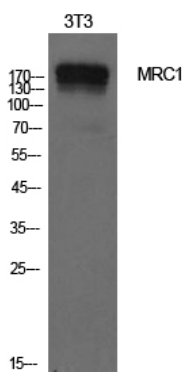
## Background

Mediates the endocytosis of glycoproteins by macrophages. Binds both sulfated and non-sulfated polysaccharide chains. (Microbial infection) Acts as phagocytic receptor for bacteria, fungi and other pathogens. Acts as a receptor for Dengue virus envelope protein E (PubMed:18266465). Interacts with hepatitis B virus envelope protein (PubMed:19683778).

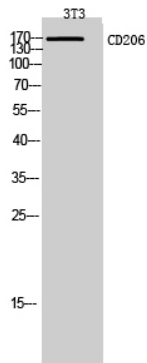
## Research Area

Immunology

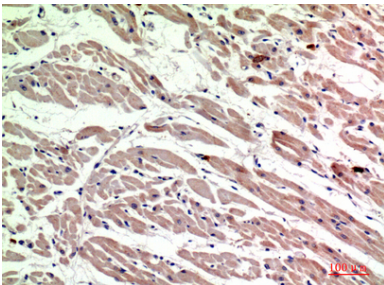
## Image Data



Western blot analysis of Mannose Receptor in NIH3T3 lysates using Mannose Receptor antibody.



Western blot analysis of Mannose Receptor in 3T3 lysates using CD206 antibody.



Immunohistochemistry analysis of paraffin-embedded Human heart using Mannose Receptor antibody. High-pressure and temperature Sodium Citrate pH 6.0 was used for antigen retrieval.