

---

**Product Name: Prostate Specific Antigen Rabbit Polyclonal Antibody****Catalog #: APRab00528**

For research use only.

**Summary**

<b>Description</b>	Rabbit polyclonal Antibody
<b>Host</b>	Rabbit
<b>Application</b>	WB,IHC,ELISA
<b>Reactivity</b>	Human
<b>Conjugation</b>	Unconjugated
<b>Modification</b>	Unmodified
<b>Isotype</b>	IgG
<b>Clonality</b>	Polyclonal
<b>Form</b>	Liquid
<b>Concentration</b>	1mg/ml
<b>Storage</b>	Aliquot and store at -20°C (valid for 12 months). Avoid freeze/thaw cycles.
<b>Shipping</b>	Ice bags
<b>Buffer</b>	Liquid in PBS containing 50% glycerol, 0.5% protective protein and 0.02% sodium azide, pH 7.3.
<b>Purification</b>	Affinity Purification

**Application**

<b>Dilution Ratio</b>	WB 1:500-1:1000,IHC 1:50-1:100,ELISA 1:5000-1:20000
<b>Molecular Weight</b>	Calculated MW: 29 kDa; Observed MW: 29 kDa

**Antigen Information**

<b>Gene Name</b>	KLK3
<b>Alternative Names</b>	KLK3; APS; Prostate-specific antigen; PSA; Gamma-seminoprotein; Seminolisin; Kallikrein-3; P-30 antigen; Semenogelase
<b>Gene ID</b>	354
<b>SwissProt ID</b>	P07288
<b>Immunogen</b>	A synthetic peptide of human Prostate Specific Antigen

**Background**

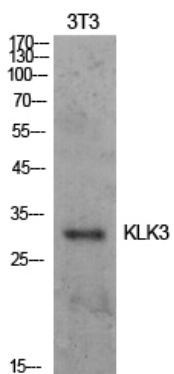
PSA/KLK3 is a member of the glandular kallikrein subfamily of serine proteases. Upon cleavage of 7 amino-terminal amino

acids, it is activated to liquefy semen in the seminal coagulum. Although PSA/KLK3 is produced in healthy individuals, investigators have found abnormally high levels in the blood of men with advanced prostate cancer.

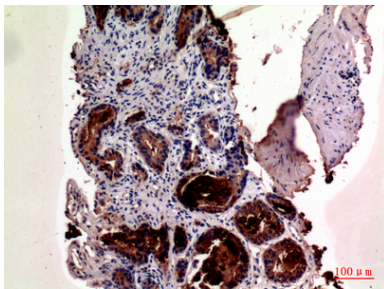
## Research Area

Neuroscience

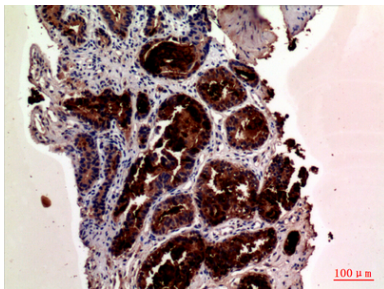
## Image Data



Western blot analysis of Prostate Specific Antigen in NIH3T3 lysates using Prostate Specific Antigen antibody.



Immunohistochemistry analysis of paraffin-embedded Human prostate cancer using Prostate Specific Antigen antibody. High-pressure and temperature Sodium Citrate pH 6.0 was used for antigen retrieval.



Immunohistochemistry analysis of paraffin-embedded Human prostate cancer using Prostate Specific Antigen antibody. High-pressure and temperature Sodium Citrate pH 6.0 was used for antigen retrieval.