

Product Name: RNA Polymerase III Subunit C7 Rabbit Polyclonal Antibody**Catalog #: APRab00525**

For research use only.

Summary

Description	Rabbit polyclonal Antibody
Host	Rabbit
Application	WB,IHC,ELISA
Reactivity	Human,Mouse
Conjugation	Unconjugated
Modification	Unmodified
Isotype	IgG
Clonality	Polyclonal
Form	Liquid
Concentration	1mg/ml
Storage	Aliquot and store at -20°C (valid for 12 months). Avoid freeze/thaw cycles.
Shipping	Ice bags
Buffer	Liquid in PBS containing 50% glycerol, 0.5% protective protein and 0.02% sodium azide, pH 7.3.
Purification	Affinity Purification

Application

Dilution Ratio	WB 1:500-1:1000,IHC 1:50-1:100,ELISA 1:5000-1:20000
Molecular Weight	Calculated MW: 26 kDa; Observed MW: 26 kDa

Antigen Information

Gene Name	POLR3G
Alternative Names	POLR3G; DNA-directed RNA polymerase III subunit RPC7; RNA polymerase III subunit C7; DNA-directed RNA polymerase III subunit G; RNA polymerase III 32 kDa subunit; RPC32
Gene ID	10622
SwissProt ID	O15318
Immunogen	The antiserum was produced against synthesized peptide derived from the Internal region of human POLR3G. AA range:151-200

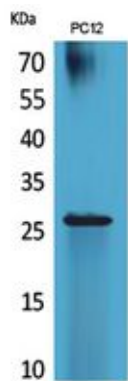
Background

DNA-dependent RNA polymerase catalyzes the transcription of DNA into RNA using the four ribonucleoside triphosphates as substrates.

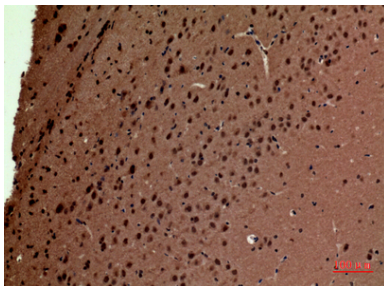
Research Area

Epigenetics and Nuclear Signaling

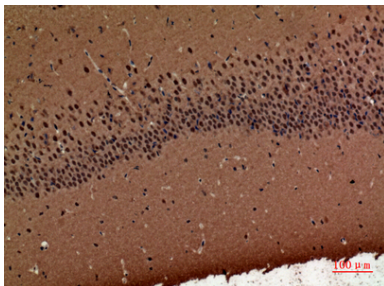
Image Data



Western blot analysis of RNA Polymerase III Subunit C7 in PC-12 lysates using RNA Polymerase III Subunit C7 antibody.



Immunohistochemistry analysis of paraffin-embedded mouse brain using RNA Polymerase III Subunit C7 antibody. High-pressure and temperature Sodium Citrate pH 6.0 was used for antigen retrieval.



Immunohistochemistry analysis of paraffin-embedded mouse brain using RNA Polymerase III Subunit C7 antibody. High-pressure and temperature Sodium Citrate pH 6.0 was used for antigen retrieval.