

**Product Name: Integrin alpha 4 Rabbit Polyclonal Antibody****Catalog #: APRab00523**

For research use only.

**Summary**

<b>Description</b>	Rabbit polyclonal Antibody
<b>Host</b>	Rabbit
<b>Application</b>	WB,IHC,ELISA
<b>Reactivity</b>	Human
<b>Conjugation</b>	Unconjugated
<b>Modification</b>	Unmodified
<b>Isotype</b>	IgG
<b>Clonality</b>	Polyclonal
<b>Form</b>	Liquid
<b>Concentration</b>	1mg/ml
<b>Storage</b>	Aliquot and store at -20°C (valid for 12 months). Avoid freeze/thaw cycles.
<b>Shipping</b>	Ice bags
<b>Buffer</b>	Liquid in PBS containing 50% glycerol, 0.5% protective protein and 0.02% sodium azide, pH 7.3.
<b>Purification</b>	Affinity Purification

**Application**

<b>Dilution Ratio</b>	WB 1:500-1:1000,IHC 1:50-1:100,ELISA 1:5000-1:20000
<b>Molecular Weight</b>	Calculated MW: 127 kDa; Observed MW: 127 kDa

**Antigen Information**

<b>Gene Name</b>	ITGAD
<b>Alternative Names</b>	ITGAD; Integrin alpha-D; ADB2; CD11 antigen-like family member D; Leukointegrin alpha D; CD11d
<b>Gene ID</b>	3681
<b>SwissProt ID</b>	Q13349
<b>Immunogen</b>	The antiserum was produced against synthesized peptide derived from the Internal region of human ITGAD. AA range:901-950

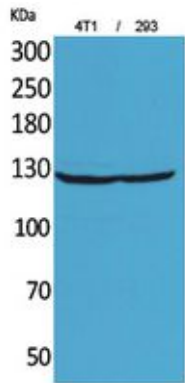
**Background**

Integrin alpha-D/beta-2 is a receptor for ICAM3 and VCAM1.

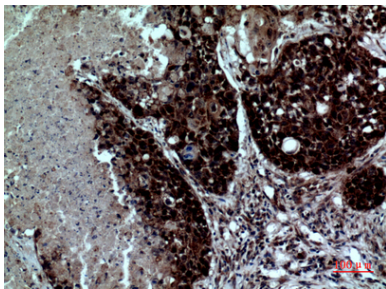
## Research Area

Immunology

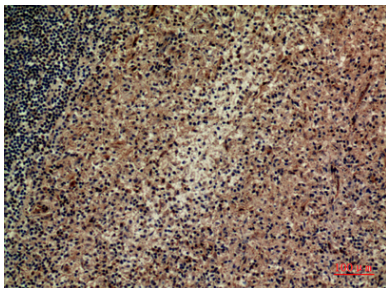
## Image Data



Western blot analysis of Integrin alpha 4 in 4T 293 lysates using Integrin alpha 4 antibody.



Immunohistochemistry analysis of paraffin-embedded Human lung using Integrin alpha 4 antibody. High-pressure and temperature Sodium Citrate pH 6.0 was used for antigen retrieval.



Immunohistochemistry analysis of paraffin-embedded Human spleen using Integrin alpha 4 antibody. High-pressure and temperature Sodium Citrate pH 6.0 was used for antigen retrieval.