

---

**Product Name: CXCR2 Rabbit Polyclonal Antibody****Catalog #: APRab00520**

For research use only.

**Summary**

<b>Description</b>	Rabbit polyclonal Antibody
<b>Host</b>	Rabbit
<b>Application</b>	WB,IHC,ELISA
<b>Reactivity</b>	Human
<b>Conjugation</b>	Unconjugated
<b>Modification</b>	Unmodified
<b>Isotype</b>	IgG
<b>Clonality</b>	Polyclonal
<b>Form</b>	Liquid
<b>Concentration</b>	1mg/ml
<b>Storage</b>	Aliquot and store at -20°C (valid for 12 months). Avoid freeze/thaw cycles.
<b>Shipping</b>	Ice bags
<b>Buffer</b>	Liquid in PBS containing 50% glycerol, 0.5% protective protein and 0.02% sodium azide, pH 7.3.
<b>Purification</b>	Affinity Purification

**Application**

<b>Dilution Ratio</b>	WB 1:500-1:1000,IHC 1:50-1:100,ELISA 1:5000-1:20000
<b>Molecular Weight</b>	Calculated MW: 41 kDa; Observed MW: 41 kDa

**Antigen Information**

<b>Gene Name</b>	CXCR2 CXCR2; IL8RB; C-X-C chemokine receptor type 2; CXC-R2; CXCR-2; CDw128b; GRO/MGSA
<b>Alternative Names</b>	receptor; High affinity interleukin-8 receptor B; IL-8R B; IL-8 receptor type 2; CD antigen CD182
<b>Gene ID</b>	3579
<b>SwissProt ID</b>	P25025
<b>Immunogen</b>	The antiserum was produced against synthesized peptide derived from the N-terminal region of human CXCR2. AA range:1-50

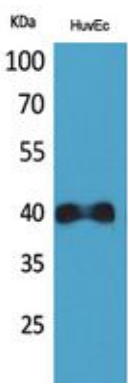
## Background

The protein encoded by this gene is a member of the G-protein-coupled receptor family. This protein is a receptor for interleukin 8 (IL8). It binds to IL8 with high affinity, and transduces the signal through a G-protein activated second messenger system. This receptor also binds to chemokine (C-X-C motif) ligand 1 (CXCL1/MGSA), a protein with melanoma growth stimulating activity, and has been shown to be a major component required for serum-dependent melanoma cell growth. This receptor mediates neutrophil migration to sites of inflammation. The angiogenic effects of IL8 in inTinal microvascular endothelial cells are found to be mediated by this receptor. Knockout studies in mice suggested that this receptor controls the positioning of oligodendrocyte precursors in developing spinal cord by arresting their migration. This gene, IL8RA, a gene encoding another high affinity IL8 receptor, as well as IL8RBP, a pseudogene of IL8RB, form a gene cluster in a region mapped to chromosome 2q33-q36. Alternatively spliced variants, encoding the same protein, have been identified.

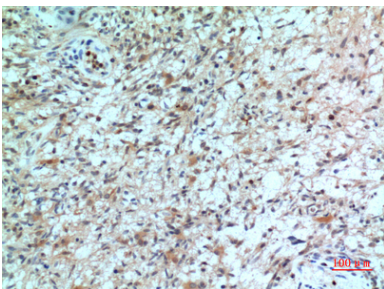
## Research Area

Immunology

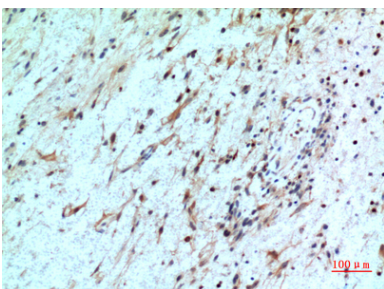
## Image Data



Western blot analysis of CXCR2 in HuvEc lysates using CXCR2 antibody.



Immunohistochemistry analysis of paraffin-embedded Human brain using CXCR2 antibody. High-pressure and temperature Sodium Citrate pH 6.0 was used for antigen retrieval.



Immunohistochemistry analysis of paraffin-embedded Human brain using CXCR2 antibody. High-pressure and temperature Sodium Citrate pH 6.0 was used for antigen retrieval.

