

Product Name: Growth Hormone Rabbit Polyclonal Antibody**Catalog #: APRab00507**

For research use only.

Summary

Description	Rabbit polyclonal Antibody
Host	Rabbit
Application	IHC,ELISA
Reactivity	Human
Conjugation	Unconjugated
Modification	Unmodified
Isotype	IgG
Clonality	Polyclonal
Form	Liquid
Concentration	1mg/ml
Storage	Aliquot and store at -20°C (valid for 12 months). Avoid freeze/thaw cycles.
Shipping	Ice bags
Buffer	Liquid in PBS containing 50% glycerol, 0.5% protective protein and 0.02% sodium azide, pH 7.3.
Purification	Affinity Purification

Application

Dilution Ratio	IHC 1:50-1:100,ELISA 1:5000-1:20000
Molecular Weight	-

Antigen Information

Gene Name	GH1/2
Alternative Names	Somatotropin (Growth hormone; GH; GH-N; Growth hormone 1; Pituitary growth hormone) Growth hormone variant (GH-V; Growth hormone 2; Placenta-specific growth hormone)
Gene ID	2689/2688
SwissProt ID	P01241/P01242
Immunogen	Synthetic peptide from human protein at AA range: 180-217

Background

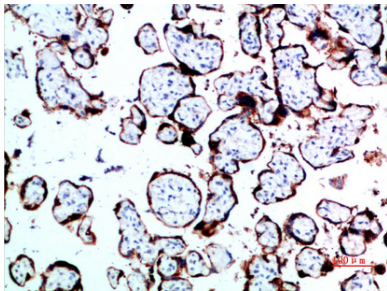
The protein encoded by this gene is a member of the somatotropin/prolactin family of hormones which play an important role

in growth control.

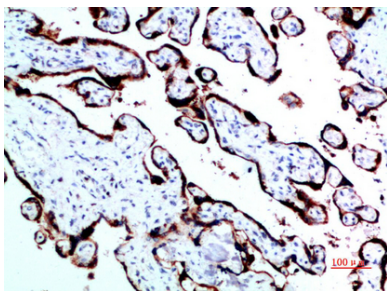
Research Area

Signal Transduction

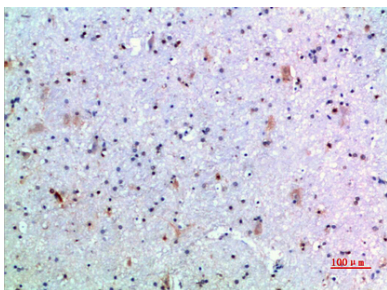
Image Data



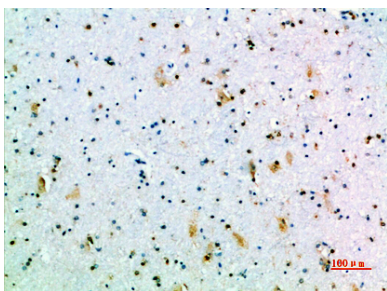
Immunohistochemistry analysis of paraffin-embedded Human placenta using Growth Hormone antibody. High-pressure and temperature Sodium Citrate pH 6.0 was used for antigen retrieval.



Immunohistochemical analysis of paraffin-embedded Human tonsils using Growth Hormone antibody. High-pressure and temperature Sodium Citrate pH 6.0 was used for antigen retrieval.



Immunohistochemistry analysis of paraffin-embedded Human brain using Growth Hormone antibody. High-pressure and temperature Sodium Citrate pH 6.0 was used for antigen retrieval.



Immunohistochemistry analysis of paraffin-embedded Human brain using Growth Hormone antibody. High-pressure and temperature Sodium Citrate pH 6.0 was used for antigen retrieval.