
Product Name: CMTM8 Rabbit Polyclonal Antibody**Catalog #: APRab00505**

For research use only.

Summary

Description	Rabbit polyclonal Antibody
Host	Rabbit
Application	WB,IHC,ELISA
Reactivity	Human
Conjugation	Unconjugated
Modification	Unmodified
Isotype	IgG
Clonality	Polyclonal
Form	Liquid
Concentration	1mg/ml
Storage	Aliquot and store at -20°C (valid for 12 months). Avoid freeze/thaw cycles.
Shipping	Ice bags
Buffer	Liquid in PBS containing 50% glycerol, 0.5% protective protein and 0.02% sodium azide, pH 7.3.
Purification	Affinity Purification

Application

Dilution Ratio	WB 1:500-1:1000,IHC 1:50-1:100,ELISA 1:5000-1:20000
Molecular Weight	Calculated MW: 20 kDa; Observed MW: 20 kDa

Antigen Information

Gene Name	CMTM8
Alternative Names	CMTM8; CKLFSF8; CKLF-like MARVEL transmembrane domain-containing protein 8; Chemokine-like factor superfamily member 8
Gene ID	152189
SwissProt ID	Q8IZV2
Immunogen	The antiserum was produced against synthesized peptide derived from the Internal region of human CMTM8. AA range:101-150

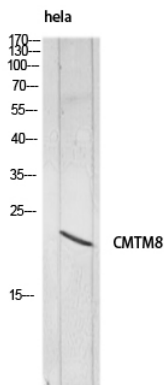
Background

This gene belongs to the chemokine-like factor gene superfamily, a novel family that is similar to the chemokine and the transmembrane 4 superfamilies. This gene is one of several chemokine-like factor genes located in a cluster on chromosome 3. This gene is widely expressed in many tissues, but the exact function of the encoded protein is unknown.

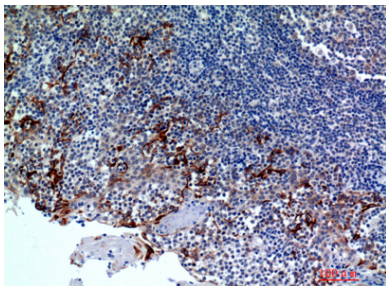
Research Area

Signal Transduction

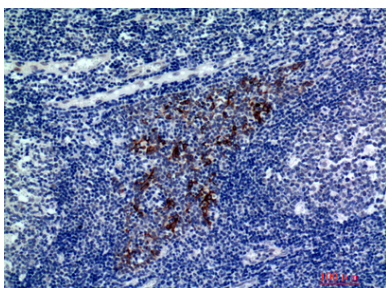
Image Data



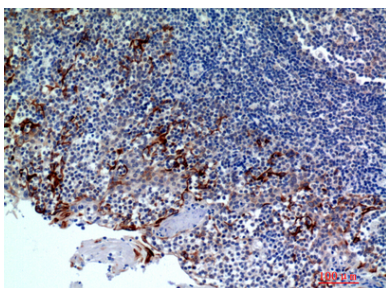
Western blot analysis of CMTM8 in hela lysates using CMTM8 antibody.



Immunohistochemistry analysis of paraffin-embedded Human tonsils using CMTM8 antibody. High-pressure and temperature Sodium Citrate pH 6.0 was used for antigen retrieval.



Immunohistochemistry analysis of paraffin-embedded Human tonsils using CMTM8 antibody. High-pressure and temperature Sodium Citrate pH 6.0 was used for antigen retrieval.



Immunohistochemistry analysis of paraffin-embedded Human tonsils2 using CMTM8 antibody. High-pressure and temperature Sodium Citrate pH 6.0 was used for antigen retrieval.