

---

**Product Name: ASAH3L Rabbit Polyclonal Antibody****Catalog #: APRab00504**

For research use only.

**Summary**

<b>Description</b>	Rabbit polyclonal Antibody
<b>Host</b>	Rabbit
<b>Application</b>	WB,IHC,ELISA
<b>Reactivity</b>	Human,Mouse
<b>Conjugation</b>	Unconjugated
<b>Modification</b>	Unmodified
<b>Isotype</b>	IgG
<b>Clonality</b>	Polyclonal
<b>Form</b>	Liquid
<b>Concentration</b>	1mg/ml
<b>Storage</b>	Aliquot and store at -20°C (valid for 12 months). Avoid freeze/thaw cycles.
<b>Shipping</b>	Ice bags
<b>Buffer</b>	Liquid in PBS containing 50% glycerol, 0.5% protective protein and 0.02% sodium azide, pH 7.3.
<b>Purification</b>	Affinity Purification

**Application**

<b>Dilution Ratio</b>	WB 1:500-1:1000,IHC 1:50-1:100,ELISA 1:5000-1:20000
<b>Molecular Weight</b>	Calculated MW: 31 kDa; Observed MW: 31 kDa

**Antigen Information**

<b>Gene Name</b>	ACER2
<b>Alternative Names</b>	ACER2; ASAH3L; PP11646; Alkaline ceramidase 2; AlkCDase 2; Alkaline CDase 2; haCER2; Acylsphingosine deacylase 3-like; N-acylsphingosine amidohydrolase 3-like
<b>Gene ID</b>	340485
<b>SwissProt ID</b>	Q5QJU3
<b>Immunogen</b>	Synthesized peptide derived from ASAH3L . at AA range: 50-130

**Background**

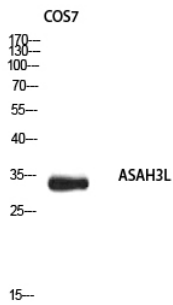
Golgi ceramidase that catalyzes the hydrolysis of ceramides into sphingoid bases like sphingosine and free fatty acids at

alkaline pH.

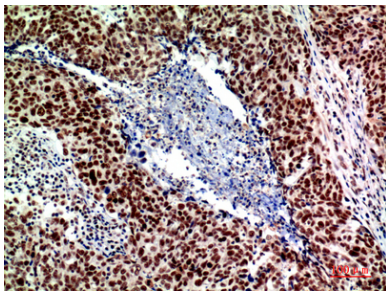
## Research Area

Signal Transduction

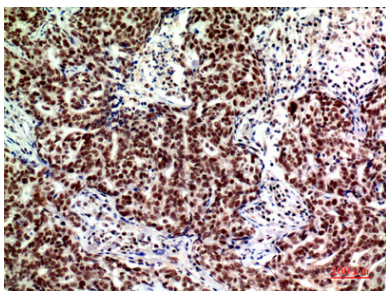
## Image Data



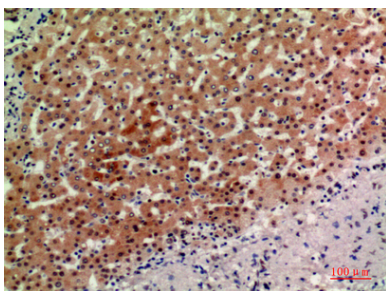
Western blot analysis of ASA3L in COS7 lysates using ASA3L antibody.



Immunohistochemistry analysis of paraffin-embedded Human breastcancer using ASA3L antibody. High-pressure and temperature Sodium Citrate pH 6.0 was used for antigen retrieval.



Immunohistochemistry analysis of paraffin-embedded Human breastcancer using ASA3L antibody. High-pressure and temperature Sodium Citrate pH 6.0 was used for antigen retrieval.



Immunohistochemistry analysis of paraffin-embedded Human liver using ASA3L antibody. High-pressure and temperature Sodium Citrate pH 6.0 was used for antigen retrieval.