
Product Name: NTE Rabbit Polyclonal Antibody**Catalog #: APRab00492**

For research use only.

Summary

Description	Rabbit polyclonal Antibody
Host	Rabbit
Application	WB,IHC,ELISA
Reactivity	Human,Mouse,Rat
Conjugation	Unconjugated
Modification	Unmodified
Isotype	IgG
Clonality	Polyclonal
Form	Liquid
Concentration	1mg/ml
Storage	Aliquot and store at -20°C (valid for 12 months). Avoid freeze/thaw cycles.
Shipping	Ice bags
Buffer	Liquid in PBS containing 50% glycerol, 0.5% protective protein and 0.02% sodium azide, pH 7.3.
Purification	Affinity Purification

Application

Dilution Ratio	WB 1:500-1:1000,IHC 1:50-1:100,ELISA 1:5000-1:20000
Molecular Weight	Calculated MW: 151 kDa; Observed MW: 151 kDa

Antigen Information

Gene Name	PNPLA6
Alternative Names	PNPLA6; NTE; Neuropathy target esterase; Patatin-like phospholipase domain-containing protein 6
Gene ID	10908
SwissProt ID	Q8IY17
Immunogen	The antiserum was produced against synthesized peptide derived from the Internal region of human PNPLA6. AA range:1031-1080

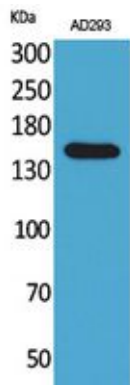
Background

Phospholipase B that deacylates intracellular phosphatidylcholine (PtdCho), generating glycerophosphocholine (GroPtdCho).

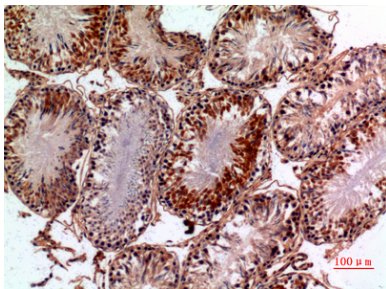
Research Area

Neuroscience

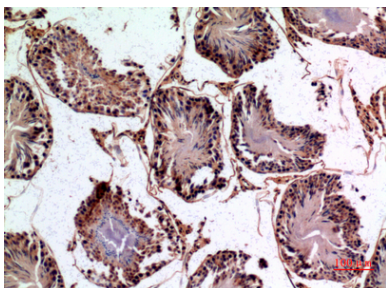
Image Data



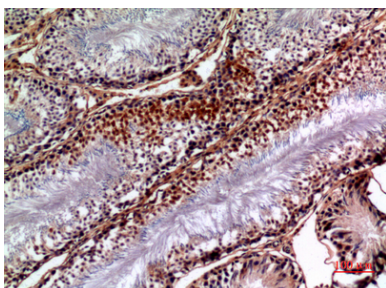
Western blot analysis of NTE in AD293 lysates using NTE antibody.



Immunohistochemistry analysis of paraffin-embedded rat testis using NTE antibody. High-pressure and temperature Sodium Citrate pH 6.0 was used for antigen retrieval.



Immunohistochemistry analysis of paraffin-embedded rat testis using NTE antibody. High-pressure and temperature Sodium Citrate pH 6.0 was used for antigen retrieval.



Immunohistochemistry analysis of paraffin-embedded rat testis using NTE antibody. High-pressure and temperature Sodium Citrate pH 6.0 was used for antigen retrieval.