
Product Name: FGL1 Rabbit Polyclonal Antibody**Catalog #: APRab00485**

For research use only.

Summary

Description	Rabbit polyclonal Antibody
Host	Rabbit
Application	WB,IHC,ELISA
Reactivity	Human,Mouse,Rat
Conjugation	Unconjugated
Modification	Unmodified
Isotype	IgG
Clonality	Polyclonal
Form	Liquid
Concentration	1mg/ml
Storage	Aliquot and store at -20°C (valid for 12 months). Avoid freeze/thaw cycles.
Shipping	Ice bags
Buffer	Liquid in PBS containing 50% glycerol, 0.5% protective protein and 0.02% sodium azide, pH 7.3.
Purification	Affinity Purification

Application

Dilution Ratio	WB 1:500-1:1000,IHC 1:50-1:100,ELISA 1:5000-1:20000
Molecular Weight	Calculated MW: 36 kDa; Observed MW: 36 kDa

Antigen Information

Gene Name	FGL1
Alternative Names	FGL1; HFREP1; Fibrinogen-like protein 1; HP-041; Hepassocin; Hepatocyte-derived fibrinogen-related protein 1; HFREP-1; Liver fibrinogen-related protein 1; LFIRE-1
Gene ID	2267
SwissProt ID	Q08830
Immunogen	Synthesized peptide derived from the Internal region of human Hepassocin.

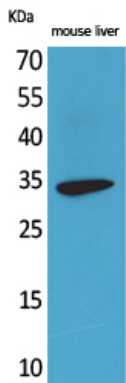
Background

Immune suppressive molecule that inhibits antigen-specific T-cell activation by acting as a major ligand of LAG3.

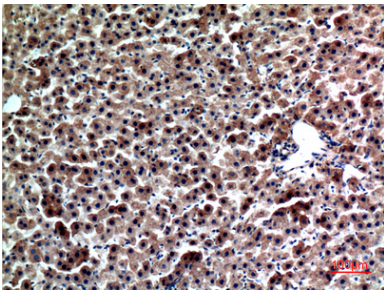
Research Area

Cardiovascular

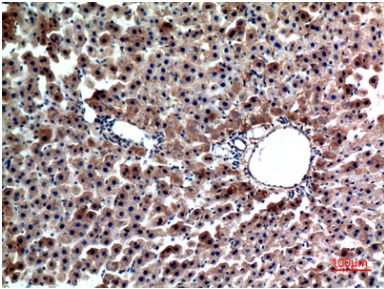
Image Data



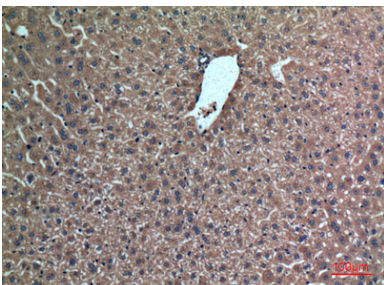
Western blot analysis of FGL1 in mouse liver lysates using FGL1 antibody.



Immunohistochemistry analysis of paraffin-embedded rat liver using FGL1 antibody. High-pressure and temperature Sodium Citrate pH 6.0 was used for antigen retrieval.



Immunohistochemistry analysis of paraffin-embedded rat liver using FGL1 antibody. High-pressure and temperature Sodium Citrate pH 6.0 was used for antigen retrieval.



Immunohistochemistry analysis of paraffin-embedded mouse liver using FGL1 antibody. High-pressure and temperature Sodium Citrate pH 6.0 was used for antigen retrieval.