

Product Name: Ubiquitin Conjugating Enzyme E2 A/B Rabbit Polyclonal Antibody
Catalog #: APRab00483

For research use only.

Summary

Description	Rabbit polyclonal Antibody
Host	Rabbit
Application	WB,IHC,ELISA
Reactivity	Human,Mouse,Rat
Conjugation	Unconjugated
Modification	Unmodified
Isotype	IgG
Clonality	Polyclonal
Form	Liquid
Concentration	1mg/ml
Storage	Aliquot and store at -20°C (valid for 12 months). Avoid freeze/thaw cycles.
Shipping	Ice bags
Buffer	Liquid in PBS containing 50% glycerol, 0.5% protective protein and 0.02% sodium azide, pH 7.3.
Purification	Affinity Purification

Application

Dilution Ratio	WB 1:500-1:1000,IHC 1:50-1:100,ELISA 1:5000-1:20000
Molecular Weight	Calculated MW: 17 kDa; Observed MW: 17 kDa

Antigen Information

Gene Name	UBE2A/UBE2B
Alternative Names	UBE2A; RAD6A; Ubiquitin-conjugating enzyme E2 A; RAD6 homolog A; HR6A; hHR6A; Ubiquitin carrier protein A; Ubiquitin-protein ligase A; UBE2B; RAD6B; Ubiquitin-conjugating enzyme E2 B; RAD6 homolog B; HR6B; hHR6B; Ubiquitin carrier protein B; Ubiquitin-conjugating enzyme E2-17 kDa; Ubiquitin-protein ligase B
Gene ID	7319/7320
SwissProt ID	P49459/P63146
Immunogen	Synthesized peptide derived from the C-terminal region of human UBE2A/B.

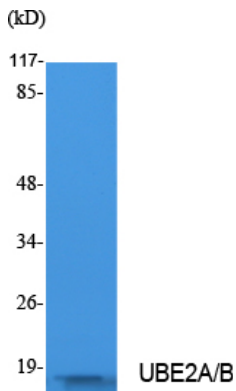
Background

Accepts ubiquitin from the E1 complex and catalyzes its covalent attachment to other proteins. In association with the E3 enzyme BRE1 (RNF20 and/or RNF40), it plays a role in transcription regulation by catalyzing the monoubiquitination of histone H2B at 'Lys-120' to form H2BK120ub1. H2BK120ub1 gives a specific tag for epigenetic transcriptional activation, elongation by RNA polymerase II, telomeric silencing, and is also a prerequisite for H3K4me and H3K79me formation.

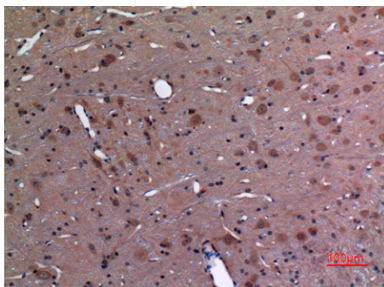
Research Area

Epigenetics and Nuclear Signaling

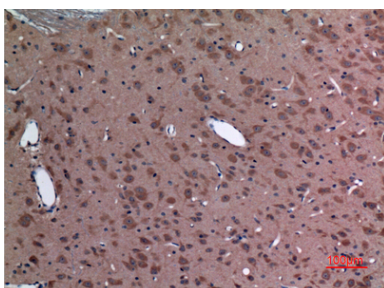
Image Data



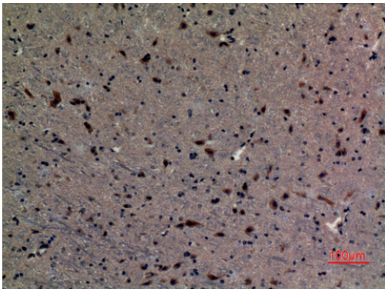
Western blot analysis of Ubiquitin Conjugating Enzyme E2 A/B in Jurkat lysates using UBE2A/B antibody.



Immunohistochemistry analysis of paraffin-embedded rat brain using Ubiquitin Conjugating Enzyme E2 A/B antibody. High-pressure and temperature Sodium Citrate pH 6.0 was used for antigen retrieval.



Immunohistochemistry analysis of paraffin-embedded rat brain using Ubiquitin Conjugating Enzyme E2 A/B antibody. High-pressure and temperature Sodium Citrate pH 6.0 was used for antigen retrieval.



Immunohistochemistry analysis of paraffin-embedded mouse brain using Ubiquitin Conjugating Enzyme E2 A/B antibody. High-pressure and temperature Sodium Citrate pH 6.0 was used for antigen retrieval.