
Product Name: TGF beta 2 Rabbit Polyclonal Antibody**Catalog #: APRab00480**

For research use only.

Summary

Description	Rabbit polyclonal Antibody
Host	Rabbit
Application	WB,IHC,ELISA
Reactivity	Human,Mouse,Rat
Conjugation	Unconjugated
Modification	Unmodified
Isotype	IgG
Clonality	Polyclonal
Form	Liquid
Concentration	1mg/ml
Storage	Aliquot and store at -20°C (valid for 12 months). Avoid freeze/thaw cycles.
Shipping	Ice bags
Buffer	Liquid in PBS containing 50% glycerol, 0.5% protective protein and 0.02% sodium azide, pH 7.3.
Purification	Affinity Purification

Application

Dilution Ratio	WB 1:500-1:1000,IHC 1:50-1:100,ELISA 1:5000-1:20000
Molecular Weight	Calculated MW: 48 kDa; Observed MW: 47,12 kDa

Antigen Information

Gene Name	TGFB2
Alternative Names	Transforming growth factor beta-2; TGF-beta-2; BSC-1 cell growth inhibitor; Cetermin; Glioblastoma-derived T-cell suppressor factor; G-TSF; Polyergin
Gene ID	7042
SwissProt ID	P61812
Immunogen	The antiserum was produced against synthesized peptide derived from human TGF beta2. AA range:361-410

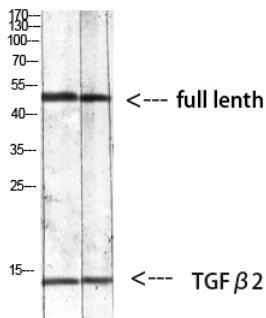
Background

Transforming growth factor beta-2 proprotein: Precursor of the Latency-associated peptide (LAP) and Transforming growth factor beta-2 (TGF-beta-2) chains, which constitute the regulatory and active subunit of TGF-beta-2, respectively.

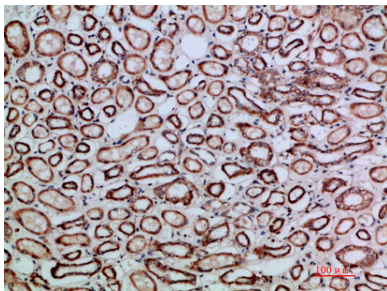
Research Area

Signal Transduction

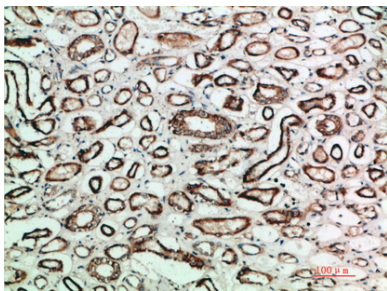
Image Data



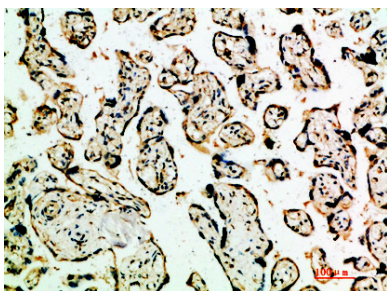
Western blot analysis of TGF beta 2 in mouse kidney, 293T, mouse lung lysates using TGF beta 2 antibody.



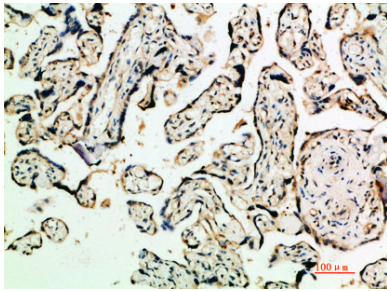
Immunohistochemistry analysis of paraffin-embedded Human kidney using TGF beta 2 antibody. High-pressure and temperature Sodium Citrate pH 6.0 was used for antigen retrieval.



Immunohistochemistry analysis of paraffin-embedded Human kidney using TGF beta 2 antibody. High-pressure and temperature Sodium Citrate pH 6.0 was used for antigen retrieval.



Immunohistochemistry analysis of paraffin-embedded Human placenta using TGF beta 2 antibody. High-pressure and temperature Sodium Citrate pH 6.0 was used for antigen retrieval.



Immunohistochemistry analysis of paraffin-embedded Human placenta using TGF beta 2 antibody. High-pressure and temperature Sodium Citrate pH 6.0 was used for antigen retrieval.