

**Product Name: MYH Rabbit Polyclonal Antibody****Catalog #: APRab00476**

For research use only.

**Summary**

<b>Description</b>	Rabbit polyclonal Antibody
<b>Host</b>	Rabbit
<b>Application</b>	WB,IHC,ELISA
<b>Reactivity</b>	Human,Mouse,Rat
<b>Conjugation</b>	Unconjugated
<b>Modification</b>	Unmodified
<b>Isotype</b>	IgG
<b>Clonality</b>	Polyclonal
<b>Form</b>	Liquid
<b>Concentration</b>	1mg/ml
<b>Storage</b>	Aliquot and store at -20°C (valid for 12 months). Avoid freeze/thaw cycles.
<b>Shipping</b>	Ice bags
<b>Buffer</b>	Liquid in PBS containing 50% glycerol, 0.5% protective protein and 0.02% sodium azide, pH 7.3.
<b>Purification</b>	Affinity Purification

**Application**

<b>Dilution Ratio</b>	WB 1:500-1:1000,IHC 1:50-1:100,ELISA 1:5000-1:20000
<b>Molecular Weight</b>	Calculated MW: 223 kDa; Observed MW: 223 kDa

**Antigen Information**

<b>Gene Name</b>	MYH1 MYH1; Myosin-1; Myosin heavy chain 1; Myosin heavy chain 2x; MyHC-2x; Myosin heavy chain IIx/d; MyHC-IIx/d; Myosin heavy chain; skeletal muscle; adult 1; MYH2; MYHSA2;
<b>Alternative Names</b>	Myosin-2; Myosin heavy chain 2Myosin heavy chain 2; Myosin heavy chain 2a; MyHC-2a; Myosin heavy chain IIa; MyHC-IIa; Myosin heavy chain; skeletal muscle; adult 2; MYH3; Myosin-3; Muscle embryonic myosin heavy chain; Myosin heavy chain 3
<b>Gene ID</b>	4619/4620/4621/4622/4624/4625/4626
<b>SwissProt ID</b>	P12882/Q9UKX2/P11055/Q9Y623/P13533/P12883/P13535
<b>Immunogen</b>	The antiserum was produced against synthesized peptide derived from human MYH-pan

around the non-acetylation site of Lys1394. AA range:1351-1400

## Background

Muscle contraction.

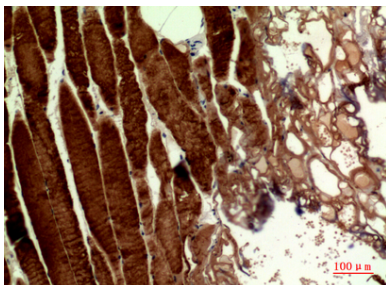
## Research Area

Signal Transduction

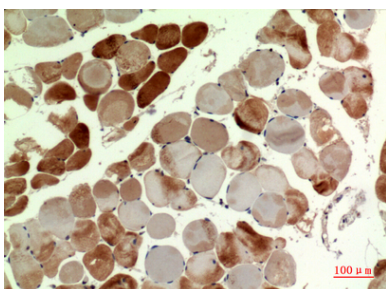
## Image Data



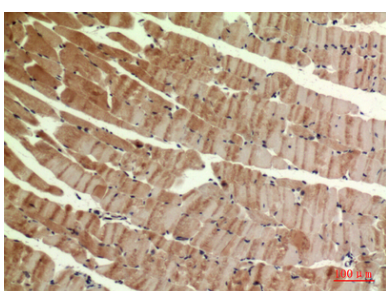
Western blot analysis of MYH pAb in 4T1 lysates using MYH antibody.



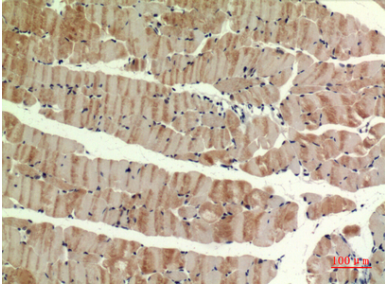
Immunohistochemistry analysis of paraffin-embedded Human muscle using MYH antibody. High-pressure and temperature Sodium Citrate pH 6.0 was used for antigen retrieval.



Immunohistochemistry analysis of paraffin-embedded Human muscle using MYH antibody. High-pressure and temperature Sodium Citrate pH 6.0 was used for antigen retrieval.



Immunohistochemistry analysis of paraffin-embedded mouse muscle using MYH antibody. High-pressure and temperature Sodium Citrate pH 6.0 was used for antigen retrieval.



Immunohistochemistry analysis of paraffin-embedded mouse muscle using MYH antibody. High-pressure and temperature Sodium Citrate pH 6.0 was used for antigen retrieval.