

Product Name: Inhibin beta E Rabbit Polyclonal Antibody**Catalog #: APRab00474**

For research use only.

Summary

| | |
|----------------------|--|
| Description | Rabbit polyclonal Antibody |
| Host | Rabbit |
| Application | WB,IHC,ELISA |
| Reactivity | Human,Mouse,Rat |
| Conjugation | Unconjugated |
| Modification | Unmodified |
| Isotype | IgG |
| Clonality | Polyclonal |
| Form | Liquid |
| Concentration | 1mg/ml |
| Storage | Aliquot and store at -20°C (valid for 12 months). Avoid freeze/thaw cycles. |
| Shipping | Ice bags |
| Buffer | Liquid in PBS containing 50% glycerol, 0.5% protective protein and 0.02% sodium azide, pH 7.3. |
| Purification | Affinity Purification |

Application

| | |
|-------------------------|---|
| Dilution Ratio | WB 1:500-1:1000,IHC 1:50-1:100,ELISA 1:5000-1:20000 |
| Molecular Weight | Calculated MW: 39 kDa; Observed MW: 39 kDa |

Antigen Information

| | |
|--------------------------|--|
| Gene Name | INHBE |
| Alternative Names | INHBE; Inhibin beta E chain; Activin beta-E chain |
| Gene ID | 83729 |
| SwissProt ID | P58166 |
| Immunogen | The antiserum was produced against synthesized peptide derived from the C-terminal region of human INHBE. AA range:301-350 |

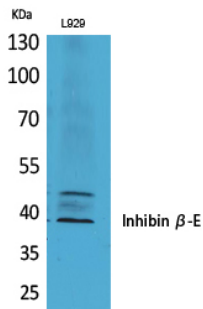
Background

Inhibins and activins inhibit and activate, respectively, the secretion of follitropin by the pituitary gland.

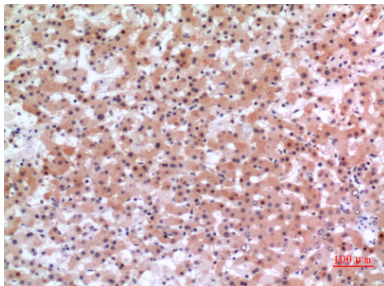
Research Area

Signal Transduction

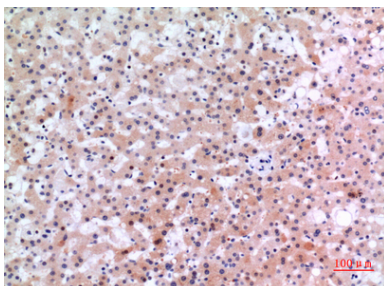
Image Data



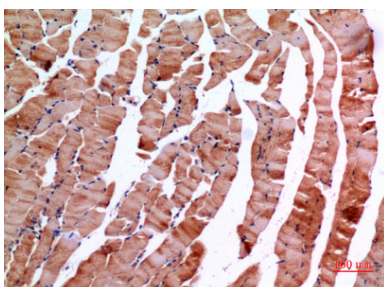
Western blot analysis of Inhibin beta E in L929 lysates using Inhibin beta E antibody.



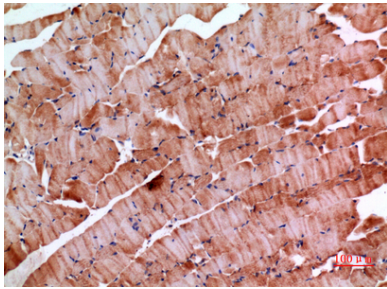
Immunohistochemistry analysis of paraffin-embedded Human liver using Inhibin beta E antibody. High-pressure and temperature Sodium Citrate pH 6.0 was used for antigen retrieval.



Immunohistochemistry analysis of paraffin-embedded Human liver using Inhibin beta E antibody. High-pressure and temperature Sodium Citrate pH 6.0 was used for antigen retrieval.



Immunohistochemistry analysis of paraffin-embedded mouse muscle using Inhibin beta E antibody. High-pressure and temperature Sodium Citrate pH 6.0 was used for antigen retrieval.



Immunohistochemistry analysis of paraffin-embedded mouse muscle using Inhibin beta E antibody. High-pressure and temperature Sodium Citrate pH 6.0 was used for antigen retrieval.