
Product Name: Hormone Sensitive Lipase Rabbit Polyclonal Antibody**Catalog #: APRab00464**

For research use only.

Summary

Description	Rabbit polyclonal Antibody
Host	Rabbit
Application	WB,IHC,ELISA
Reactivity	Human,Mouse,Rat
Conjugation	Unconjugated
Modification	Unmodified
Isotype	IgG
Clonality	Polyclonal
Form	Liquid
Concentration	1mg/ml
Storage	Aliquot and store at -20°C (valid for 12 months). Avoid freeze/thaw cycles.
Shipping	Ice bags
Buffer	Liquid in PBS containing 50% glycerol, 0.5% protective protein and 0.02% sodium azide, pH 7.3.
Purification	Affinity Chromatography

Application

Dilution Ratio	WB 1:500-1:1000,IHC 1:50-1:100,ELISA 1:5000-1:20000
Molecular Weight	Calculated MW: 117 kDa; Observed MW: 120 kDa

Antigen Information

Gene Name	LIPE
Alternative Names	LIPE; Hormone-sensitive lipase; HSL
Gene ID	3991
SwissProt ID	Q05469
Immunogen	The antiserum was produced against synthesized peptide derived from human HSL. AA range:518-567

Background

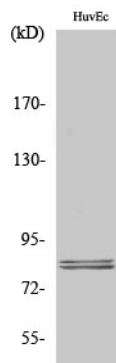
hormone sensitive lipase is a lipolytic enzyme of the 'GDXG' family. Plays a rate limiting step in triglyceride lipolysis. In adipose

tissue and heart, it primarily hydrolyzes stored triglycerides to free fatty acids, while in steroidogenic tissues, it principally converts cholesteryl esters to free cholesterol for steroid hormone production.

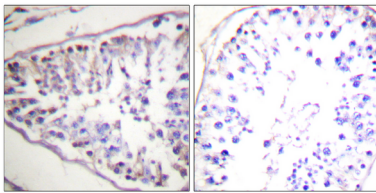
Research Area

Cardiovascular

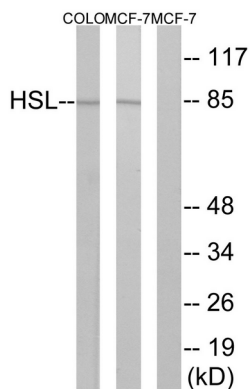
Image Data



Western blot analysis of Hormone Sensitive Lipase in various lysates using Hormone Sensitive Lipase antibody.



Immunohistochemistry analysis of paraffin-embedded Human tonsil tissue, using HSL antibody. High-pressure and temperature Sodium Citrate pH 6.0 was used for antigen retrieval. Sample with blocking peptide on the right.



Western blot analysis of Hormone Sensitive Lipase in COLO and MCF-7 lysates using HSL antibody. The lane on the right is blocked with the synthesized peptide.