

Product Name: LIM Kinase 1 Rabbit Polyclonal Antibody**Catalog #: APRab00458**

For research use only.

Summary

Description	Rabbit polyclonal Antibody
Host	Rabbit
Application	WB
Reactivity	Human, Mouse, Rat
Conjugation	Unconjugated
Modification	Unmodified
Isotype	IgG
Clonality	Polyclonal
Form	Liquid
Concentration	1mg/ml
Storage	Aliquot and store at -20°C (valid for 12 months). Avoid freeze/thaw cycles.
Shipping	Ice bags
Buffer	Liquid in PBS containing 50% glycerol, 0.5% protective protein and 0.02% sodium azide, pH 7.3.
Purification	Affinity Purification

Application

Dilution Ratio	WB 1:500-1:1000
Molecular Weight	Calculated MW: 73 kDa; Observed MW: 73 kDa

Antigen Information

Gene Name	LIMK1
Alternative Names	LIMK1; LIMK; LIM domain kinase 1; LIMK-1
Gene ID	3984
SwissProt ID	P53667
Immunogen	A synthetic peptide of human LIM Kinase 1

Background

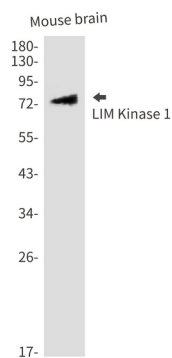
Protein kinase which regulates actin filament dynamics. Phosphorylates and inactivates the actin binding/depolymerizing factor cofilin, thereby stabilizing the actin cytoskeleton. Stimulates axonal outgrowth and may be involved in brain

development. Isoform 3 has a dominant negative effect on actin cytoskeletal changes.

Research Area

Neuroscience

Image Data



Western blot analysis of LIM Kinase 1 in mouse brain lysates using LIM Kinase 1 antibody.