
Product Name: Toll-Like Receptor 6 Rabbit Polyclonal Antibody**Catalog #: APRab00445**

For research use only.

Summary

Description	Rabbit polyclonal Antibody
Host	Rabbit
Application	IHC
Reactivity	Human, Mouse, Rat
Conjugation	Unconjugated
Modification	Unmodified
Isotype	IgG
Clonality	Polyclonal
Form	Liquid
Concentration	1mg/ml
Storage	Aliquot and store at -20°C (valid for 12 months). Avoid freeze/thaw cycles.
Shipping	Ice bags
Buffer	Liquid in PBS containing 50% glycerol, 0.5% protective protein and 0.02% sodium azide, pH 7.3.
Purification	Affinity Purification

Application

Dilution Ratio	IHC 1:50-1:100
Molecular Weight	-

Antigen Information

Gene Name	TLR6
Alternative Names	Toll-like receptor 6; CD286
Gene ID	10333
SwissProt ID	Q9Y2C9
Immunogen	

Background

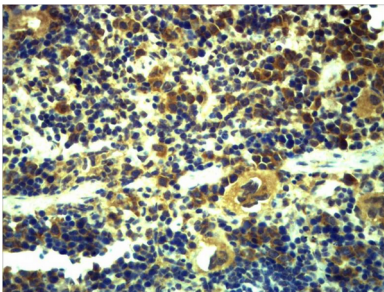
The protein encoded by this gene is a member of the Toll-like receptor (TLR) family which plays a fundamental role in pathogen recognition and activation of innate immunity. TLRs are highly conserved from Drosophila to humans and share structural and

functional similarities. They recognize pathogen-associated molecular patterns (PAMPs) that are expressed on infectious agents, and mediate the production of cytokines necessary for the development of effective immunity. The various TLRs exhibit different patterns of expression. This receptor functionally interacts with toll-like receptor 2 to mediate cellular response to bacterial lipoproteins. A Ser249Pro polymorphism in the extracellular domain of the encoded protein may be associated with an increased of asthma in some populations.

Research Area

Immunology

Image Data



Immunohistochemistry analysis of paraffin-embedded mouse Spleen Tissue using Toll-Like Receptor 6 antibody. High-pressure and temperature Sodium Citrate pH 6.0 was used for antigen retrieval.