

---

**Product Name: Bovine Serum Albumin Rabbit Polyclonal Antibody****Catalog #: APRab00436**

For research use only.

**Summary**

<b>Description</b>	Rabbit polyclonal Antibody
<b>Host</b>	Rabbit
<b>Application</b>	WB,ELISA
<b>Reactivity</b>	Bovine
<b>Conjugation</b>	Unconjugated
<b>Modification</b>	Unmodified
<b>Isotype</b>	IgG
<b>Clonality</b>	Polyclonal
<b>Form</b>	Liquid
<b>Concentration</b>	1mg/ml
<b>Storage</b>	Aliquot and store at -20°C (valid for 12 months). Avoid freeze/thaw cycles.
<b>Shipping</b>	Ice bags
<b>Buffer</b>	Liquid in PBS containing 50% glycerol, 0.5% protective protein and 0.02% sodium azide, pH 7.3.
<b>Purification</b>	Affinity Purification

**Application**

<b>Dilution Ratio</b>	WB 1:500-1:1000,ELISA 1:5000-1:20000
<b>Molecular Weight</b>	Calculated MW: 69 kDa; Observed MW: 66 kDa

**Antigen Information**

<b>Gene Name</b>	Alb
<b>Alternative Names</b>	BSA; ALB; Albumin; HSA; PRO0883; Serum Albumin
<b>Gene ID</b>	280717.0
<b>SwissProt ID</b>	P02769
<b>Immunogen</b>	

**Background**

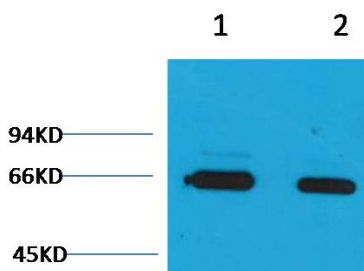
Serum albumin, the main protein of plasma, has a good binding capacity for water, Ca<sup>2+</sup>, Na<sup>+</sup>, K<sup>+</sup>, fatty acids, hormones, bilirubin and drugs. Its main function is the regulation of the colloidal osmotic pressure of blood. Major zinc transporter in

plasma, typically binds about 80% of all plasma zinc.

## Research Area

Cardiovascular

## Image Data



Western blot analysis of Bovine Serum Albumin in Bovine Serum Albumin lysates using Bovine Serum Albumin antibody.