
Product Name: Rab2B Rabbit Polyclonal Antibody**Catalog #: APRab00428**

For research use only.

Summary

Description	Rabbit polyclonal Antibody
Host	Rabbit
Application	WB,ELISA
Reactivity	Human,Mouse,Rat
Conjugation	Unconjugated
Modification	Unmodified
Isotype	IgG
Clonality	Polyclonal
Form	Liquid
Concentration	1mg/ml
Storage	Aliquot and store at -20°C (valid for 12 months). Avoid freeze/thaw cycles.
Shipping	Ice bags
Buffer	Liquid in PBS containing 50% glycerol, 0.5% protective protein and 0.02% sodium azide, pH 7.3.
Purification	Affinity Chromatography

Application

Dilution Ratio	WB 1:500-1:1000,ELISA 1:5000-1:20000
Molecular Weight	Calculated MW: 24 kDa; Observed MW: 24 kDa

Antigen Information

Gene Name	RAB2B
Alternative Names	Ras-related protein Rab-2B
Gene ID	84932
SwissProt ID	Q8WUD1
Immunogen	The antiserum was produced against synthesized peptide derived from human RAB2B. AA range:103-152

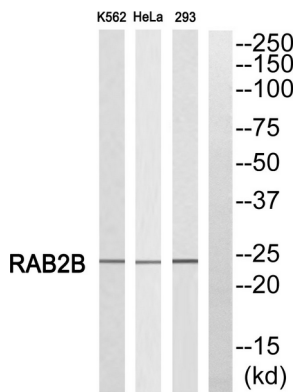
Background

Required for protein transport from the endoplasmic reticulum to the Golgi complex.

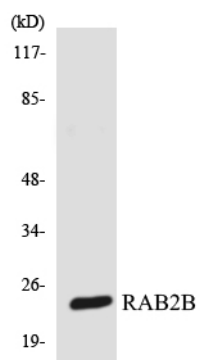
Research Area

Signal Transduction

Image Data



Western blot analysis of Rab2B in K562, HeLa, 293 lysates using RAB2B antibody. The lane on the right is blocked with the RAB2B peptide.



Western blot analysis of Rab2B in 293 lysates using RAB2B antibody.