

---

**Product Name: NCAPG2 Rabbit Polyclonal Antibody****Catalog #: APRab00426**

For research use only.

**Summary**

<b>Description</b>	Rabbit polyclonal Antibody
<b>Host</b>	Rabbit
<b>Application</b>	IHC,ELISA
<b>Reactivity</b>	Human
<b>Conjugation</b>	Unconjugated
<b>Modification</b>	Unmodified
<b>Isotype</b>	IgG
<b>Clonality</b>	Polyclonal
<b>Form</b>	Liquid
<b>Concentration</b>	1mg/ml
<b>Storage</b>	Aliquot and store at -20°C (valid for 12 months). Avoid freeze/thaw cycles.
<b>Shipping</b>	Ice bags
<b>Buffer</b>	Liquid in PBS containing 50% glycerol, 0.5% protective protein and 0.02% sodium azide, pH 7.3.
<b>Purification</b>	Affinity Chromatography

**Application**

<b>Dilution Ratio</b>	IHC 1:50-1:100,ELISA 1:5000-1:20000
<b>Molecular Weight</b>	-

**Antigen Information**

<b>Gene Name</b>	NCAPG2
<b>Alternative Names</b>	MTB; CAPG2; LUZP5; CAP-G2; hCAP-G2
<b>Gene ID</b>	54892
<b>SwissProt ID</b>	Q86X12
<b>Immunogen</b>	The antiserum was produced against synthesized peptide derived from human NCAPG2. AA range:561-610

**Background**

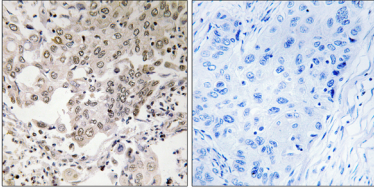
Regulatory subunit of the condensin-2 complex, a complex which establishes mitotic chromosome architecture and is involved

in physical rigidity of the chromatid axis.

## Research Area

Cell Biology

## Image Data



Immunohistochemistry analysis of paraffin-embedded Human lung carcinoma, using NCAPG2 antibody. High-pressure and temperature Sodium Citrate pH 6.0 was used for antigen retrieval. Sample with blocking peptide on the right.