

Product Name: SGLT1 Rabbit Polyclonal Antibody**Catalog #: APRab00424**

For research use only.

Summary

Description	Rabbit polyclonal Antibody
Host	Rabbit
Application	WB,ELISA
Reactivity	Human,Mouse,Rat
Conjugation	Unconjugated
Modification	Unmodified
Isotype	IgG
Clonality	Polyclonal
Form	Liquid
Concentration	1mg/ml
Storage	Aliquot and store at -20°C (valid for 12 months). Avoid freeze/thaw cycles.
Shipping	Ice bags
Buffer	Liquid in PBS containing 50% glycerol, 0.5% protective protein and 0.02% sodium azide, pH 7.3.
Purification	Affinity Chromatography

Application

Dilution Ratio	WB 1:500-1:1000,ELISA 1:5000-1:20000
Molecular Weight	Calculated MW: 73 kDa; Observed MW: 73 kDa

Antigen Information

Gene Name	SLC5A1
Alternative Names	SLC5A1; NAGT; SGLT1; Sodium/glucose cotransporter 1; Na(+)/glucose cotransporter 1; High affinity sodium-glucose cotransporter; Solute carrier family 5 member 1
Gene ID	6523
SwissProt ID	P13866
Immunogen	The antiserum was produced against synthesized peptide derived from human SGLT-1. AA range:525-574

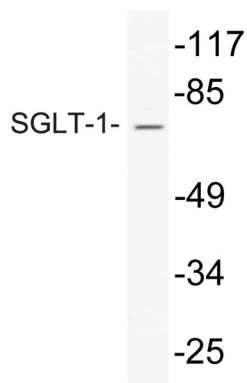
Background

Actively transports glucose into cells by Na⁺ cotransport with a Na⁺ to glucose coupling ratio of 2:1. Efficient substrate transport in mammalian kidney is provided by the concerted action of a low affinity high capacity and a high affinity low capacity Na⁺/glucose cotransporter arranged in series along kidney proximal tubules.

Research Area

Signal Transduction

Image Data



Western blot analysis of SGLT1 in HepG2 lysates using SGLT1 antibody.