

**Product Name: Cytochrome P450 4Z1 Rabbit Polyclonal Antibody****Catalog #: APRab00422**

For research use only.

**Summary**

<b>Description</b>	Rabbit polyclonal Antibody
<b>Host</b>	Rabbit
<b>Application</b>	IHC, ICC/IF, ELISA
<b>Reactivity</b>	Human
<b>Conjugation</b>	Unconjugated
<b>Modification</b>	Unmodified
<b>Isotype</b>	IgG
<b>Clonality</b>	Polyclonal
<b>Form</b>	Liquid
<b>Concentration</b>	1mg/ml
<b>Storage</b>	Aliquot and store at -20°C (valid for 12 months). Avoid freeze/thaw cycles.
<b>Shipping</b>	Ice bags
<b>Buffer</b>	Liquid in PBS containing 50% glycerol, 0.5% protective protein and 0.02% sodium azide, pH 7.3.
<b>Purification</b>	Affinity Chromatography

**Application**

<b>Dilution Ratio</b>	IHC 1:50-1:100, ICC/IF 1:50-1:200, ELISA 1:5000-1:20000
<b>Molecular Weight</b>	-

**Antigen Information**

<b>Gene Name</b>	CYP4Z1
<b>Alternative Names</b>	CYP4A20
<b>Gene ID</b>	199974
<b>SwissProt ID</b>	Q86W10
<b>Immunogen</b>	The antiserum was produced against synthesized peptide derived from human Cytochrome P450 4Z1. AA range:71-120

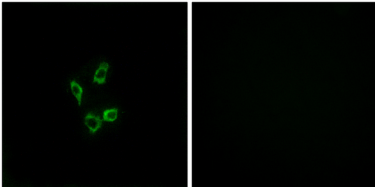
**Background**

A cytochrome P450 monooxygenase that catalyzes the in-chain oxidation of fatty acids.

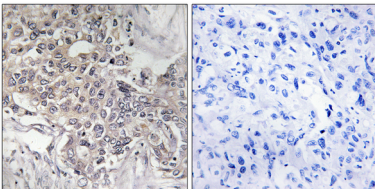
## Research Area

Cardiovascular

## Image Data



Immunofluorescence analysis of Cytochrome P450 4Z1 in HUVEC cells using Cytochrome P450 4Z1 antibody. Sample with blocking peptide on the right.



Immunohistochemical analysis of paraffin-embedded Human tonsils using Cytochrome P450 4Z1 antibody. Sample with blocking peptide on the right. High-pressure and temperature Sodium Citrate pH 6.0 was used for antigen retrieval.