

Summary

Production Name	STEAP2 Rabbit Polyclonal Antibody
Description	Rabbit Polyclonal Antibody
Host	Rabbit
Application	IHC-F,IHC-P,ICC/IF,ELISA
Reactivity	Human,Mouse

Performance

Conjugation	Unconjugated
Modification	Unmodified
Isotype	IgG
Clonality	Polyclonal
Form	Liquid
Storage	Store at 4°C short term. Aliquot and store at -20°C long term. Avoid freeze/thaw cycles.
Buffer	Liquid in PBS containing 50% glycerol, 0.5% protective protein and 0.02% sodium azide, pH 7.3.
Purification	Affinity Chromatography

Immunogen

Gene Name	STEAP2 STEAP2; PCANAP1; STAMP1; Metalloreductase STEAP2; Prostate cancer-associated protein 1; Protein up-regulated in metastatic prostate cancer; PUMPCn; Six-transmembrane epithelial antigen of prostate 2; SixTransMembrane protein of prostate 1
Alternative Names	
Gene ID	261729
SwissProt ID	Q8NFT2.

Application

Dilution Ratio	IHC: 1:50-1:100 IF: 1:50-1:200 ELISA: 1:10000
Molecular Weight	-

Product Name: STEAP2 Rabbit Polyclonal Antibody
Catalog #: APRab00421



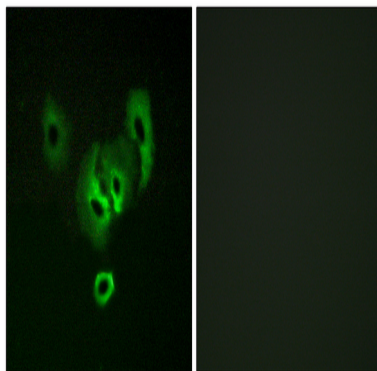
Background

Metalloreductase that has the ability to reduce both Fe^{3+} to Fe^{2+} and Cu^{2+} to Cu^{1+} . Uses NAD^{+} as acceptor .

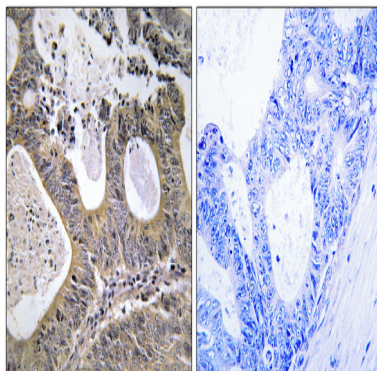
Research Area

Cancer

Image Data



Immunofluorescence analysis of STEAP2 in A549 cells using STEAP2 antibody. Sample with blocking peptide on the right.



Immunohistochemical analysis of paraffin-embedded Human tonsils using STEAP2 antibody. Sample with blocking peptide on the right. High-pressure and temperature Sodium Citrate pH 6.0 was used for antigen retrieval.

Note

For research use only.