
Product Name: TACSTD2 Rabbit Polyclonal Antibody**Catalog #: APRab00414**

For research use only.

Summary

Description	Rabbit polyclonal Antibody
Host	Rabbit
Application	WB,IHC,ELISA
Reactivity	Human,Mouse,Rat
Conjugation	Unconjugated
Modification	Unmodified
Isotype	IgG
Clonality	Polyclonal
Form	Liquid
Concentration	1mg/ml
Storage	Aliquot and store at -20°C (valid for 12 months). Avoid freeze/thaw cycles.
Shipping	Ice bags
Buffer	Liquid in PBS containing 50% glycerol, 0.5% protective protein and 0.02% sodium azide, pH 7.3.
Purification	Affinity Chromatography

Application

Dilution Ratio	WB 1:500-1:1000,IHC 1:50-1:100,ELISA 1:5000-1:20000
Molecular Weight	Calculated MW: 36 kDa; Observed MW: 36 kDa

Antigen Information

Gene Name	TACSTD2
Alternative Names	TACSTD2; GA733-1; M1S1; TROP2; Tumor-associated calcium signal transducer 2; Cell surface glycoprotein Trop-2; Membrane component chromosome 1 surface marker 1; Pancreatic carcinoma marker protein GA733-1
Gene ID	4070
SwissProt ID	P09758
Immunogen	The antiserum was produced against synthesized peptide derived from human TACD2. AA range:131-180

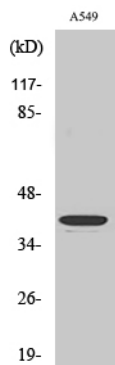
Background

This intronless gene encodes a carcinoma-associated antigen. This antigen is a cell surface receptor that transduces calcium signals. Mutations of this gene have been associated with gelatinous drop-like corneal dystrophy.

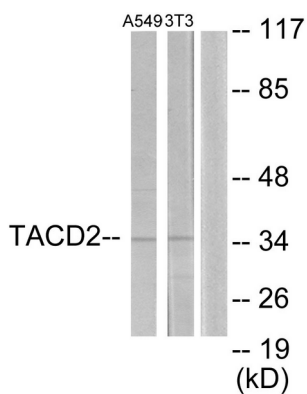
Research Area

Signal Transduction

Image Data



Western blot analysis of TACSTD2 in various lysates using TACSTD2 antibody.



Western blot analysis of TACSTD2 in A549 and NIH/3T3 lysates using TACD2 antibody. The lane on the right is blocked with the synthesized peptide.