
Product Name: Tau Rabbit Polyclonal Antibody**Catalog #: APRab00413**

For research use only.

Summary

Description	Rabbit polyclonal Antibody
Host	Rabbit
Application	WB,IHC,ICC/IF,ELISA
Reactivity	Human,Mouse,Rat
Conjugation	Unconjugated
Modification	Unmodified
Isotype	IgG
Clonality	Polyclonal
Form	Liquid
Concentration	1mg/ml
Storage	Aliquot and store at -20°C (valid for 12 months). Avoid freeze/thaw cycles.
Shipping	Ice bags
Buffer	Liquid in PBS containing 50% glycerol, 0.5% protective protein and 0.02% sodium azide, pH 7.3.
Purification	Affinity Chromatography

Application

Dilution Ratio	WB 1:500-1:1000,IHC 1:50-1:100,ICC/IF 1:50-1:200,ELISA 1:5000-1:20000
Molecular Weight	Calculated MW: 79 kDa; Observed MW: 79 kDa

Antigen Information

Gene Name	MAPT
Alternative Names	MAPT; MAPTL; MTBT1; TAU; Microtubule-associated protein tau; Neurofibrillary tangle protein; Paired helical filament-tau; PHF-tau
Gene ID	4137
SwissProt ID	P10636
Immunogen	The antiserum was produced against synthesized peptide derived from human Tau. AA range:496-545

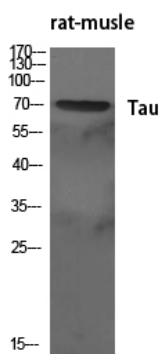
Background

This gene encodes the microtubule-associated protein tau (MAPT) whose transcript undergoes complex, regulated alternative splicing, giving rise to several mRNA species. MAPT transcripts are differentially expressed in the nervous system, depending on stage of neuronal maturation and neuron type.

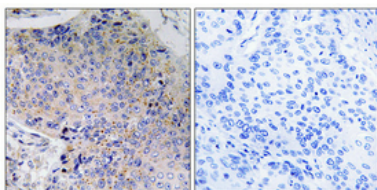
Research Area

Neuroscience

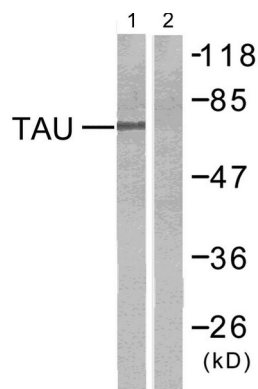
Image Data



Western blot analysis of Tau in various lysates using Tau antibody.



Immunohistochemistry analysis of paraffin-embedded Human lung cancer using Tau antibody. High-pressure and temperature Tris-EDTA pH 8.0 was used for antigen retrieval. Sample with blocking peptide on the right.



Western blot analysis of Tau in mouse brain using Tau antibody. The lane on the right is blocked with the synthesized peptide.