

**Product Name: Myomesin 2 Rabbit Polyclonal Antibody****Catalog #: APRab00409**

For research use only.

**Summary**

<b>Description</b>	Rabbit polyclonal Antibody
<b>Host</b>	Rabbit
<b>Application</b>	WB,ELISA
<b>Reactivity</b>	Human,Mouse,Monkey
<b>Conjugation</b>	Unconjugated
<b>Modification</b>	Unmodified
<b>Isotype</b>	IgG
<b>Clonality</b>	Polyclonal
<b>Form</b>	Liquid
<b>Concentration</b>	1mg/ml
<b>Storage</b>	Aliquot and store at -20°C (valid for 12 months). Avoid freeze/thaw cycles.
<b>Shipping</b>	Ice bags
<b>Buffer</b>	Liquid in PBS containing 50% glycerol, 0.5% protective protein and 0.02% sodium azide, pH 7.3.
<b>Purification</b>	Affinity Chromatography

**Application**

<b>Dilution Ratio</b>	WB 1:500-1:1000,ELISA 1:5000-1:20000
<b>Molecular Weight</b>	Calculated MW: 165 kDa; Observed MW: 165 kDa

**Antigen Information**

<b>Gene Name</b>	MYOM2
<b>Alternative Names</b>	TTNAP
<b>Gene ID</b>	9172
<b>SwissProt ID</b>	P54296
<b>Immunogen</b>	The antiserum was produced against synthesized peptide derived from human MYOM2. AA range:612-661

**Background**

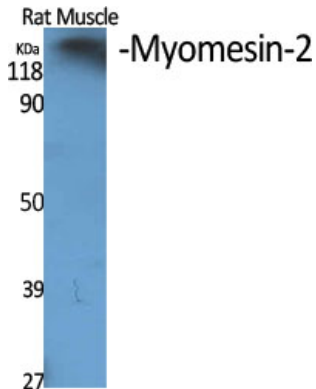
Major component of the vertebrate myofibrillar M band. Binds myosin, titin, and light meromyosin. This binding is dose

dependent.

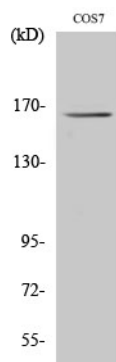
## Research Area

Signal Transduction

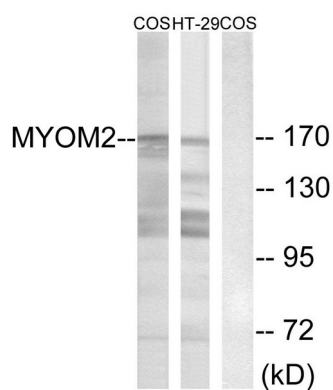
## Image Data



Western blot analysis of Myomesin 2 in various lysates using Myomesin 2 antibody.



Western blot analysis of Myomesin 2 in HT-29 lysates using Myomesin2 antibody.



Western blot analysis of Myomesin 2 in COS7 and HT-29 lysates using MYOM2 antibody. The lane on the right is blocked with the synthesized peptide.