
Product Name: Laminin alpha 5 Rabbit Polyclonal Antibody**Catalog #: APRab00405**

For research use only.

Summary

Description	Rabbit polyclonal Antibody
Host	Rabbit
Application	WB,IHC,ELISA
Reactivity	Human,Mouse
Conjugation	Unconjugated
Modification	Unmodified
Isotype	IgG
Clonality	Polyclonal
Form	Liquid
Concentration	1mg/ml
Storage	Aliquot and store at -20°C (valid for 12 months). Avoid freeze/thaw cycles.
Shipping	Ice bags
Buffer	Liquid in PBS containing 50% glycerol, 0.5% protective protein and 0.02% sodium azide, pH 7.3.
Purification	Affinity Chromatography

Application

Dilution Ratio	WB 1:500-1:1000,IHC 1:50-1:100,ELISA 1:5000-1:20000
Molecular Weight	Calculated MW: 400 kDa; Observed MW: 400 kDa

Antigen Information

Gene Name	LAMA5
Alternative Names	Laminin-10 subunit alpha; Laminin-11 subunit alpha; Laminin-15 subunit alpha
Gene ID	3911
SwissProt ID	O15230
Immunogen	The antiserum was produced against synthesized peptide derived from human LAMA5. AA range:2381-2430

Background

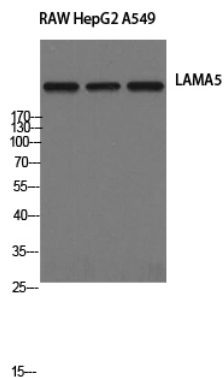
Components of the extracellular matrix exert myriad effects on tissues throughout the body. In particular, the laminins, a family

of heterotrimeric extracellular glycoproteins, affect tissue development and integrity in such diverse organs as the kidney, lung, skin, and nervous system. It is thought that laminins mediate the attachment, migration, and organization of cells into tissues during embryonic development by interacting with other extracellular matrix components. Laminins function as heterotrimeric complexes of alpha, beta, and gamma chains, with each chain type representing a different subfamily of proteins. The protein encoded by this gene belongs to the alpha subfamily of laminin chains and is a major component of basement membranes. Two transcript variants encoding different isoforms have been found for this gene, but the full-length nature of one of them has not been determined.

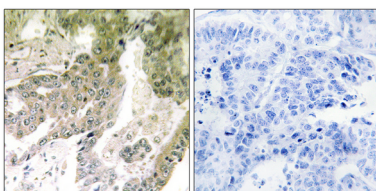
Research Area

Signal Transduction

Image Data



Western blot analysis of Laminin alpha 5 in RAW, HepG2, A549 lysates using Laminin alpha 5 antibody.



Immunohistochemistry analysis of paraffin-embedded Human lung carcinoma tissue, using LAMA5 antibody. High-pressure and temperature Sodium Citrate pH 6.0 was used for antigen retrieval. Sample with blocking peptide on the right.