
Product Name: GPR158 Rabbit Polyclonal Antibody**Catalog #: APRab00401**

For research use only.

Summary

Description	Rabbit polyclonal Antibody
Host	Rabbit
Application	WB,IHC,ICC/IF,ELISA
Reactivity	Human,Mouse
Conjugation	Unconjugated
Modification	Unmodified
Isotype	IgG
Clonality	Polyclonal
Form	Liquid
Concentration	1mg/ml
Storage	Aliquot and store at -20°C (valid for 12 months). Avoid freeze/thaw cycles.
Shipping	Ice bags
Buffer	Liquid in PBS containing 50% glycerol, 0.5% protective protein and 0.02% sodium azide, pH 7.3.
Purification	Affinity Chromatography

Application

Dilution Ratio	WB 1:500-1:1000,IHC 1:50-1:100,ICC/IF 1:50-1:200,ELISA 1:5000-1:20000
Molecular Weight	Calculated MW: 135 kDa; Observed MW: 150 kDa

Antigen Information

Gene Name	GPR158
Alternative Names	Probable G-protein coupled receptor 158
Gene ID	57512
SwissProt ID	Q5T848
Immunogen	The antiserum was produced against synthesized peptide derived from human GPR158. AA range:1-50

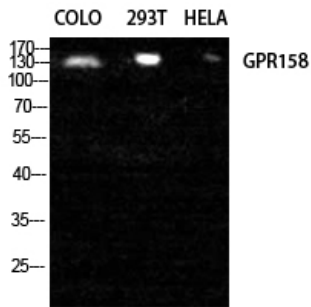
Background

Orphan receptor.

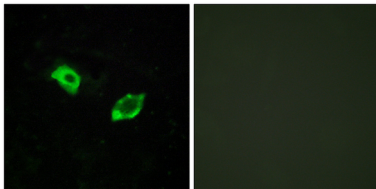
Research Area

Neuroscience

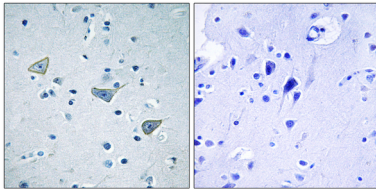
Image Data



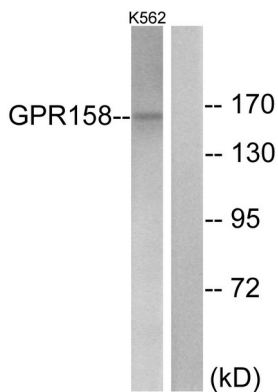
Western blot analysis of GPR158 in COLO, 293T, HELA lysates using GPR158 antibody.



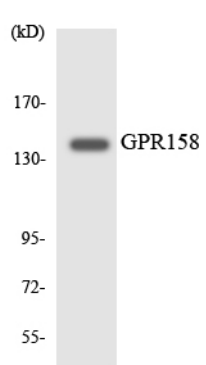
Immunofluorescence analysis of GPR158 in HUVEC using GPR158 antibody. The picture on the right is blocked using the synthesized peptide.



Immunohistochemistry analysis of paraffin-embedded Human brain tissue using GPR158 antibody. High-pressure and temperature Sodium Citrate pH 6.0 was used for antigen retrieval. Sample with blocking peptide on the right.



Western blot analysis of GPR158 in K562 lysates using GPR158 antibody. The lane on the right is blocked with the synthesized peptide.



Western blot analysis of GPR158 in HeLa using GPR158 antibody.