

Product Name: Claudin 4 Rabbit Polyclonal Antibody**Catalog #: APRab00396**

For research use only.

Summary

Description	Rabbit polyclonal Antibody
Host	Rabbit
Application	WB,IHC,ICC/IF,ELISA
Reactivity	Human,Mouse,Rat
Conjugation	Unconjugated
Modification	Unmodified
Isotype	IgG
Clonality	Polyclonal
Form	Liquid
Concentration	1mg/ml
Storage	Aliquot and store at -20°C (valid for 12 months). Avoid freeze/thaw cycles.
Shipping	Ice bags
Buffer	Liquid in PBS containing 50% glycerol, 0.5% protective protein and 0.02% sodium azide, pH 7.3.
Purification	Affinity Chromatography

Application

Dilution Ratio	WB 1:500-1:1000,IHC 1:50-1:100,ICC/IF 1:50-1:200,ELISA 1:5000-1:20000
Molecular Weight	Calculated MW: 22 kDa; Observed MW: 22 kDa

Antigen Information

Gene Name	CLDN4
Alternative Names	CLDN4; CPER; CPETR1; WBSCR8; Claudin-4; Clostridium perfringens enterotoxin receptor; CPE-R; CPE-receptor; Williams-Beuren syndrome chromosomal region 8 protein
Gene ID	1364
SwissProt ID	O14493
Immunogen	The antiserum was produced against synthesized peptide derived from human Claudin 4. AA range:160-209

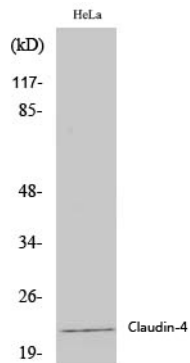
Background

Plays a major role in tight junction-specific obliteration of the intercellular space.

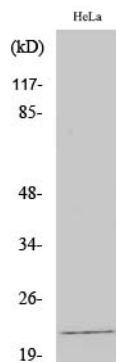
Research Area

Cell Biology

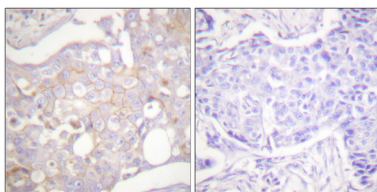
Image Data



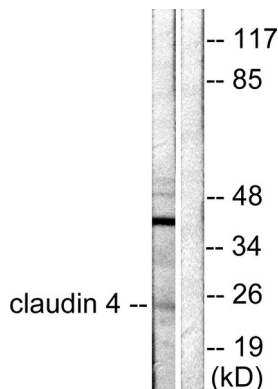
Western blot analysis of Claudin 4 in various lysates using Claudin 4 antibody.



Western blot analysis of Claudin 4 in HeLa lysates using Claudin4 antibody.



Immunohistochemistry analysis of paraffin-embedded Human breast carcinoma tissue using Claudin 4 antibody. High-pressure and temperature Sodium Citrate pH 6.0 was used for antigen retrieval.



Western blot analysis of Claudin 4 in HeLa lysates using Claudin 4 antibody. The lane on the right is blocked with the synthesized peptide.

