

---

**Product Name: CMKLR1 Rabbit Polyclonal Antibody****Catalog #: APRab00395**

For research use only.

**Summary**

<b>Description</b>	Rabbit polyclonal Antibody
<b>Host</b>	Rabbit
<b>Application</b>	WB,IHC,ICC/IF,ELISA
<b>Reactivity</b>	Human,Mouse,Rat
<b>Conjugation</b>	Unconjugated
<b>Modification</b>	Unmodified
<b>Isotype</b>	IgG
<b>Clonality</b>	Polyclonal
<b>Form</b>	Liquid
<b>Concentration</b>	1mg/ml
<b>Storage</b>	Aliquot and store at -20°C (valid for 12 months). Avoid freeze/thaw cycles.
<b>Shipping</b>	Ice bags
<b>Buffer</b>	Liquid in PBS containing 50% glycerol, 0.5% protective protein and 0.02% sodium azide, pH 7.3.
<b>Purification</b>	Affinity Chromatography

**Application**

<b>Dilution Ratio</b>	WB 1:500-1:1000,IHC 1:50-1:100,ICC/IF 1:50-1:200,ELISA 1:5000-1:20000
<b>Molecular Weight</b>	Calculated MW: 42 kDa; Observed MW: 42 kDa

**Antigen Information**

<b>Gene Name</b>	CMKLR1
<b>Alternative Names</b>	DEZ; RVER1; ChemR23; CHEMERINR
<b>Gene ID</b>	1240
<b>SwissProt ID</b>	Q99788
<b>Immunogen</b>	The antiserum was produced against synthesized peptide derived from human CMKLR1. AA range:221-270

**Background**

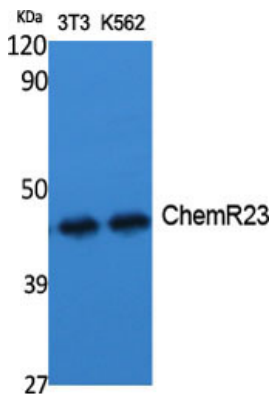
Receptor for the chemoattractant adipokine chemerin/RARRES2 and for the omega-3 fatty acid derived molecule resolvin E1.

Interaction with RARRES2 induces activation of intracellular signaling molecules, such as SKY, MAPK1/3 (ERK1/2), MAPK14/P38MAPK and PI3K leading to multifunctional effects, like, reduction of immune responses, enhancing of adipogenesis and angiogenesis. Resolvin E1 down-regulates cytokine production in macrophages by reducing the activation of MAPK1/3 (ERK1/2) and NF-kappa-B. Positively regulates adipogenesis and adipocyte metabolism. Acts as a coreceptor for several SIV strains (SIVMAC316, SIVMAC239, SIVMACL7E-FR and SIVSM62A), as well as a primary HIV-1 strain (92UG024-2).

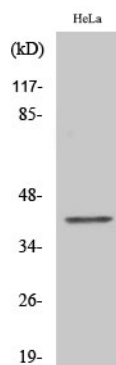
## Research Area

Signal Transduction

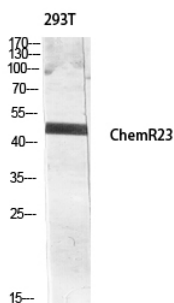
## Image Data



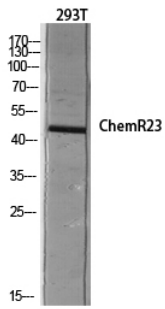
Western blot analysis of CMKLR1 in various lysates using CMKLR1 antibody.



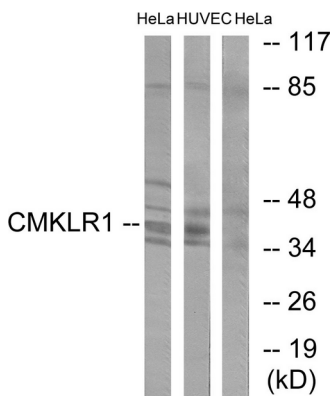
Western blot analysis of CMKLR1 in COLO205 lysates using ChemR23 antibody.



Western blot analysis of CMKLR1 in 293T lysates using ChemR23 antibody.



Western blot analysis of CMKLR1 in 293T lysates using CMKLR1 antibody.



Western blot analysis of CMKLR1 in HeLa and HUVEC lysates using CMKLR1 antibody. The lane on the right is blocked with the synthesized peptide.