

Product Name: PKC zeta Rabbit Polyclonal Antibody**Catalog #: APRab00384**

For research use only.

Summary

Description	Rabbit polyclonal Antibody
Host	Rabbit
Application	WB,IHC,ICC/IF,ELISA
Reactivity	Human,Mouse,Rat,Monkey
Conjugation	Unconjugated
Modification	Unmodified
Isotype	IgG
Clonality	Polyclonal
Form	Liquid
Concentration	1mg/ml
Storage	Aliquot and store at -20°C (valid for 12 months). Avoid freeze/thaw cycles.
Shipping	Ice bags
Buffer	Liquid in PBS containing 50% glycerol, 0.5% protective protein and 0.02% sodium azide, pH 7.3.
Purification	Affinity Chromatography

Application

Dilution Ratio	WB 1:500-1:1000,IHC 1:50-1:100,ICC/IF 1:50-1:200,ELISA 1:5000-1:20000
Molecular Weight	Calculated MW: 68 kDa; Observed MW: 80 kDa

Antigen Information

Gene Name	PRKCZ
Alternative Names	PRKCZ; PKC2; Protein kinase C zeta type; nPKC-zeta
Gene ID	5590
SwissProt ID	Q05513
Immunogen	The antiserum was produced against synthesized peptide derived from human PKC zeta. AA range:526-575

Background

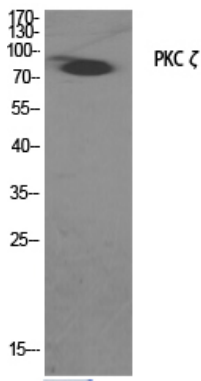
PKC is one of the earliest events in a cascade that controls a variety of cellular responses, including secretion, gene expression,

proliferation, and muscle contraction. PKC is activated by diacylglycerol which in turn phosphorylates a range of cellular proteins. PKC also serves as the receptor for phorbol esters, a class of tumor promoters. Subunit of a quaternary complex that plays a central role in epithelial cell polarization.

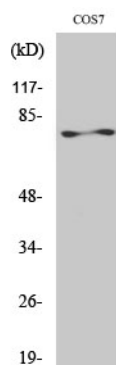
Research Area

Signal Transduction

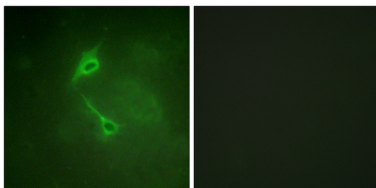
Image Data



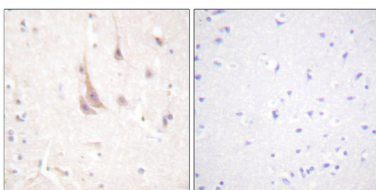
Western blot analysis of PKC zeta in various lysates using PKC zeta antibody.



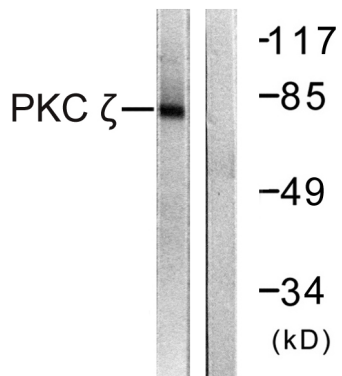
Western blot analysis of PKC zeta in COS7 lysates using PKC ζ antibody.



Immunofluorescence analysis of PKC zeta in NIH/3T3 cells, using PKC zeta antibody. The picture on the right is blocked with the synthesized peptide.



Immunohistochemistry analysis of paraffin-embedded Human brain tissue using PKC zeta antibody. High-pressure and temperature Sodium Citrate pH 6.0 was used for antigen retrieval. Sample with blocking peptide on the right.



Western blot analysis of PKC zeta in COS7 lysates treated with PMA using PKC zeta antibody. The lane on the right is blocked with the synthesized peptide.