

Product Name: Desmin Rabbit Polyclonal Antibody**Catalog #: APRab00378**

For research use only.

Summary

Description	Rabbit polyclonal Antibody
Host	Rabbit
Application	WB,IHC,ICC/IF,ELISA
Reactivity	Human,Mouse,Rat
Conjugation	Unconjugated
Modification	Unmodified
Isotype	IgG
Clonality	Polyclonal
Form	Liquid
Concentration	1mg/ml
Storage	Aliquot and store at -20°C (valid for 12 months). Avoid freeze/thaw cycles.
Shipping	Ice bags
Buffer	Liquid in PBS containing 50% glycerol, 0.5% protective protein and 0.02% sodium azide, pH 7.3.
Purification	Affinity Chromatography

Application

Dilution Ratio	WB 1:500-1:1000,IHC 1:50-1:100,ICC/IF 1:50-1:200,ELISA 1:5000-1:20000
Molecular Weight	Calculated MW: 54 kDa; Observed MW: 54 kDa

Antigen Information

Gene Name	DES
Alternative Names	DES; Desmin
Gene ID	1674
SwissProt ID	P17661
Immunogen	The antiserum was produced against synthesized peptide derived from human Desmin. AA range:421-470

Background

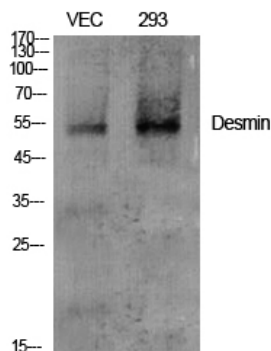
Desmin a class-III intermediate filaments found in muscle cells. In adult striated muscle they form a fibrous network connecting

myofibrils to each other and to the plasma membrane from the periphery of the Z-line structures. Mutations in this gene are associated with desmin-related myopathy, a familial cardiac and skeletal myopathy (CSM), and with distal myopathies.

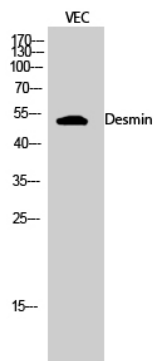
Research Area

Signal Transduction

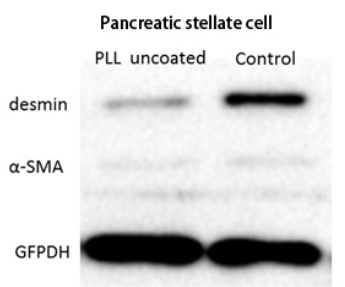
Image Data



Western blot analysis of Desmin in various lysates using Desmin antibody.

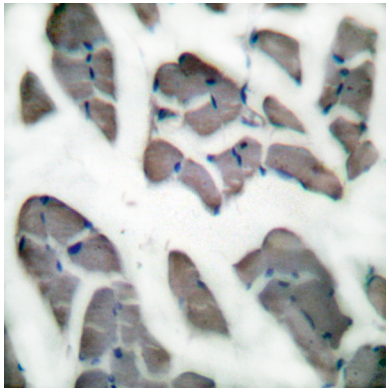


Western blot analysis of Desmin in VEC lysates using Desmin antibody.

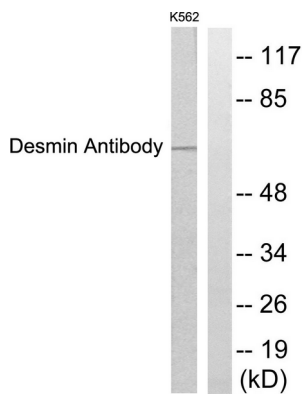


Western blot analysis of Desmin in pancreatic stellate lysates using Desmin antibody.

Union Hospital of Wuhan



Immunohistochemistry analysis of paraffin-embedded Human skeletal muscle tissue using Desmin antibody. High-pressure and temperature Sodium Citrate pH 6.0 was used for antigen retrieval. Sample with blocking peptide on the right.



Western blot analysis of Desmin in K562 lysates using Desmin antibody. The lane on the right is blocked with the synthesized peptide.