
Product Name: CD146 Rabbit Polyclonal Antibody**Catalog #: APRab00371**

For research use only.

Summary

Description	Rabbit polyclonal Antibody
Host	Rabbit
Application	WB,ICC/IF
Reactivity	Human
Conjugation	Unconjugated
Modification	Unmodified
Isotype	IgG
Clonality	Polyclonal
Form	Liquid
Concentration	1mg/ml
Storage	Aliquot and store at -20°C (valid for 12 months). Avoid freeze/thaw cycles.
Shipping	Ice bags
Buffer	50mM Tris-Glycine(pH 7.4), 0.15M NaCl, 40% Glycerol, 0.01% Sodium azide and 0.05% protective protein
Purification	Affinity Purification

Application

Dilution Ratio	WB 1:500-1:1000,ICC/IF 1:50-1:200
Molecular Weight	Calculated MW: 72 kDa; Observed MW: 120 kDa

Antigen Information

Gene Name	MCAM
Alternative Names	CD146; MUC18
Gene ID	4162
SwissProt ID	P43121
Immunogen	A synthetic peptide of human CD146

Background

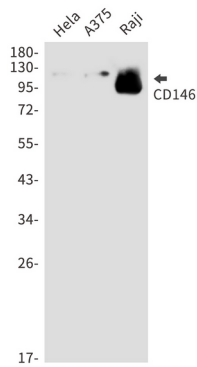
CD146 plays a role in cell adhesion, and in cohesion of the endothelial monolayer at intercellular junctions in vascular tissue. Its expression may allow melanoma cells to interact with cellular elements of the vascular system, thereby enhancing

hematogeneous tumor spread. Could be an adhesion molecule active in neural crest cells during embryonic development.

Research Area

Immunology

Image Data



Western blot analysis of CD146 in HeLa, A375, Raji lysates using CD146 antibody.