

---

**Product Name: Filamin A Rabbit Polyclonal Antibody****Catalog #: APRab00370**

For research use only.

**Summary**

<b>Description</b>	Rabbit polyclonal Antibody
<b>Host</b>	Rabbit
<b>Application</b>	WB,IHC,ICC/IF,FC
<b>Reactivity</b>	Human,Mouse,Rat
<b>Conjugation</b>	Unconjugated
<b>Modification</b>	Unmodified
<b>Isotype</b>	IgG
<b>Clonality</b>	Polyclonal
<b>Form</b>	Liquid
<b>Concentration</b>	1mg/ml
<b>Storage</b>	Aliquot and store at -20°C (valid for 12 months). Avoid freeze/thaw cycles.
<b>Shipping</b>	Ice bags
<b>Buffer</b>	50mM Tris-Glycine(pH 7.4), 0.15M NaCl, 40% Glycerol, 0.01% Sodium azide and 0.05% protective protein
<b>Purification</b>	Affinity Purification

**Application**

<b>Dilution Ratio</b>	WB 1:500-1:1000,IHC 1:50-1:100,ICC/IF 1:50-1:200,FC 1:50-1:100
<b>Molecular Weight</b>	Calculated MW: 281 kDa; Observed MW: 281 kDa

**Antigen Information**

<b>Gene Name</b>	FLNA
<b>Alternative Names</b>	ABP-280; ABPX; actin binding protein 280; Alpha-filamin; filamin 1; filamin A; alpha; FLN1; FLNA; FMD; MNS; NHBP; Non-muscle filamin; OPD; OPD1
<b>Gene ID</b>	2316
<b>SwissProt ID</b>	P21333
<b>Immunogen</b>	A synthetic peptide corresponding to target protein

**Background**

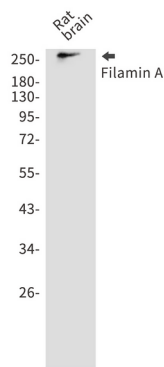
Promotes orthogonal branching of actin filaments and links actin filaments to membrane glycoproteins. Anchors various

transmembrane proteins to the actin cytoskeleton and serves as a scaffold for a wide range of cytoplasmic signaling proteins. Interaction with FLNA may allow neuroblast migration from the ventricular zone into the cortical plate.

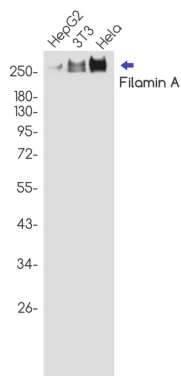
## Research Area

Cell Biology

## Image Data



Western blot analysis of Filamin A in rat brain lysates using Filamin A antibody.



Western blot analysis of Filamin A in HepG2, 3T3, HeLa lysates using Filamin A antibody.