
Product Name: AMPA Receptor 2 Rabbit Polyclonal Antibody**Catalog #: APRab00369**

For research use only.

Summary

Description	Rabbit polyclonal Antibody
Host	Rabbit
Application	WB,IHC,ICC/IF,IP
Reactivity	Mouse,Rat
Conjugation	Unconjugated
Modification	Unmodified
Isotype	IgG
Clonality	Polyclonal
Form	Liquid
Concentration	1mg/ml
Storage	Aliquot and store at -20°C (valid for 12 months). Avoid freeze/thaw cycles.
Shipping	Ice bags
Buffer	50mM Tris-Glycine(pH 7.4), 0.15M NaCl, 40% Glycerol, 0.01% Sodium azide and 0.05% protective protein
Purification	Affinity Purification

Application

Dilution Ratio	WB 1:500-1:1000,IHC 1:50-1:100,ICC/IF 1:50-1:200,IP 1:20-1:50
Molecular Weight	Calculated MW: 99 kDa; Observed MW: 99 kDa

Antigen Information

Gene Name	GRIA2
Alternative Names	GRIA2; GLUR2; Glutamate receptor 2; GluR-2; AMPA-selective glutamate receptor 2; GluR-B; GluR-K2; Glutamate receptor ionotropic; AMPA 2; GluA2
Gene ID	2891
SwissProt ID	P42262
Immunogen	A synthetic peptide of human Ionotropic Glutamate receptor 2

Background

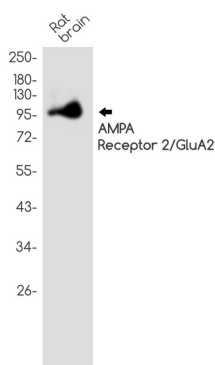
Ionotropic glutamate receptor. L-glutamate acts as an excitatory neurotransmitter at many synapses in the central nervous

system. Binding of the excitatory neurotransmitter L-glutamate induces a conformation change, leading to the opening of the cation channel, and thereby converts the chemical signal to an electrical impulse. The receptor then desensitizes rapidly and enters a transient inactive state, characterized by the presence of bound agonist.

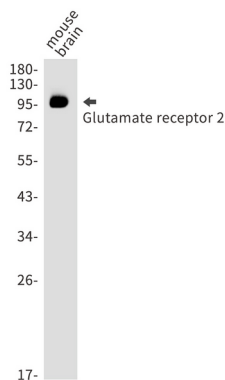
Research Area

Neuroscience

Image Data



Western blot analysis of AMPA Receptor 2/GluA2 in rat brain lysates using AMPA Receptor 2 antibody.



Western blot analysis of Glutamate receptor 2 in mouse brain lysates using Glutamate receptor 2 antibody.