
Product Name: MDB3 Rabbit Polyclonal Antibody**Catalog #: APRab00364**

For research use only.

Summary

Description	Rabbit polyclonal Antibody
Host	Rabbit
Application	WB,ICC/IF,FC,IP
Reactivity	Human,Mouse,Rat
Conjugation	Unconjugated
Modification	Unmodified
Isotype	IgG
Clonality	Polyclonal
Form	Liquid
Concentration	1mg/ml
Storage	Aliquot and store at -20°C (valid for 12 months). Avoid freeze/thaw cycles.
Shipping	Ice bags
Buffer	50mM Tris-Glycine(pH 7.4), 0.15M NaCl, 40% Glycerol, 0.01% Sodium azide and 0.05% protective protein
Purification	Affinity Purification

Application

Dilution Ratio	WB 1:500-1:1000,ICC/IF 1:50-1:200,FC 1:50-1:100,IP 1:20-1:50
Molecular Weight	Calculated MW: 33 kDa; Observed MW: 33 kDa

Antigen Information

Gene Name	MBD3
Alternative Names	MBD3; Methyl-CpG-binding domain protein 3; Methyl-CpG-binding protein MBD3
Gene ID	53615
SwissProt ID	O95983
Immunogen	A synthetic peptide of human MBD3

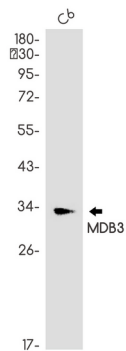
Background

Does not bind DNA by itself. Recruits histone deacetylases and DNA methyltransferases. Acts as transcriptional repressor and plays a role in gene silencing.

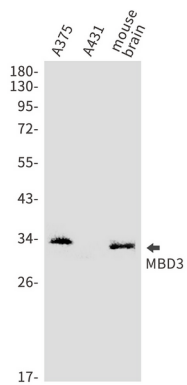
Research Area

Epigenetics and Nuclear Signaling

Image Data



Western blot analysis of MDB3 in C6 lysates using MDB3 antibody.



Western blot analysis of MDB3 in A375, A431, mouse brain lysates using MDB3 antibody.