

Product Name: IKK epsilon Rabbit Polyclonal Antibody**Catalog #: APRab00354**

For research use only.

Summary

Description	Rabbit polyclonal Antibody
Host	Rabbit
Application	WB,IHC,ICC/IF,FC
Reactivity	Human
Conjugation	Unconjugated
Modification	Unmodified
Isotype	IgG
Clonality	Polyclonal
Form	Liquid
Concentration	1mg/ml
Storage	Aliquot and store at -20°C (valid for 12 months). Avoid freeze/thaw cycles.
Shipping	Ice bags
Buffer	50mM Tris-Glycine(pH 7.4), 0.15M NaCl, 40% Glycerol, 0.01% Sodium azide and 0.05% protective protein
Purification	Affinity Purification

Application

Dilution Ratio	WB 1:500-1:1000,IHC 1:50-1:100,ICC/IF 1:50-1:200,FC 1:50-1:100
Molecular Weight	Calculated MW: 80 kDa; Observed MW: 80 kDa

Antigen Information

Gene Name	IKBKE
Alternative Names	IKBKE; IKKE; IKKi; KIAA0151; Inhibitor of nuclear factor kappa-B kinase subunit epsilon; I-kappa-B kinase epsilon; IKK-E; IKK-epsilon; IkbKE; Inducible I kappa-B kinase; IKK-i
Gene ID	9641
SwissProt ID	Q14164
Immunogen	A synthetic peptide of human IKKi/IKKe

Background

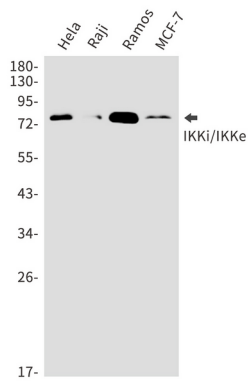
Phosphorylates inhibitors of NF-kappa-B thus leading to the dissociation of the inhibitor/NF-kappa-B complex and ultimately

the degradation of the inhibitor. May play a special role in the immune response. Protects cells against DNA damage-induced cell death.

Research Area

Cell Biology

Image Data



Western blot analysis of IKKi/IKKe in HeLa, Raji, Ramos, MCF-7 lysates using IKK epsilon antibody.