
Product Name: CCR8 Rabbit Polyclonal Antibody**Catalog #: APRab00351**

For research use only.

Summary

Description	Rabbit polyclonal Antibody
Host	Rabbit
Application	WB,ICC/IF,FC
Reactivity	Rat
Conjugation	Unconjugated
Modification	Unmodified
Isotype	IgG
Clonality	Polyclonal
Form	Liquid
Concentration	1mg/ml
Storage	Aliquot and store at -20°C (valid for 12 months). Avoid freeze/thaw cycles.
Shipping	Ice bags
Buffer	50mM Tris-Glycine(pH 7.4), 0.15M NaCl, 40% Glycerol, 0.01% Sodium azide and 0.05% protective protein
Purification	Affinity Purification

Application

Dilution Ratio	WB 1:500-1:1000,ICC/IF 1:50-1:200,FC 1:50-1:100
Molecular Weight	Calculated MW: 41 kDa; Observed MW: 41 kDa

Antigen Information

Gene Name	CCR8
Alternative Names	CKRL1; CMKBR8; CMKBRL2
Gene ID	1237
SwissProt ID	P51685
Immunogen	A synthetic peptide of human CCR8

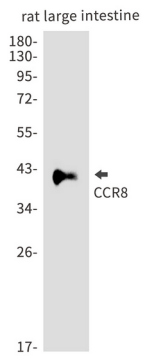
Background

Receptor for the chemokine CCL1/SCYA1/I-309. May regulate monocyte chemotaxis and thymic cell line apoptosis. Alternative coreceptor with CD4 for HIV-1 infection.

Research Area

Immunology

Image Data



Western blot analysis of CCR8 in rat large intestine lysates using CCR8 antibody.