

**Product Name: KLF4 Rabbit Polyclonal Antibody****Catalog #: APRab00347**

For research use only.

**Summary**

<b>Description</b>	Rabbit polyclonal Antibody
<b>Host</b>	Rabbit
<b>Application</b>	WB,IHC,ICC/IF,FC
<b>Reactivity</b>	Human
<b>Conjugation</b>	Unconjugated
<b>Modification</b>	Unmodified
<b>Isotype</b>	IgG
<b>Clonality</b>	Polyclonal
<b>Form</b>	Liquid
<b>Concentration</b>	1mg/ml
<b>Storage</b>	Aliquot and store at -20°C (valid for 12 months). Avoid freeze/thaw cycles.
<b>Shipping</b>	Ice bags
<b>Buffer</b>	50mM Tris-Glycine(pH 7.4), 0.15M NaCl, 40% Glycerol, 0.01% Sodium azide and 0.05% protective protein
<b>Purification</b>	Affinity Purification

**Application**

<b>Dilution Ratio</b>	WB 1:500-1:1000,IHC 1:50-1:100,ICC/IF 1:50-1:200,FC 1:50-1:100
<b>Molecular Weight</b>	Calculated MW: 55 kDa; Observed MW: 55 kDa

**Antigen Information**

<b>Gene Name</b>	KLF4
<b>Alternative Names</b>	Endothelial Kruppel like zinc finger protein; Epithelial zinc finger protein EZF; EZF; GKLF; Gut-enriched krueppel-like factor; KLF; KLF4; KLF4_HUMAN; Krueppel-like factor 4; Kruppel like factor 4; Epithelial zinc finger protein EZF; Gut enriched Krueppel like factor; Kruppel like factor 4 (gut).
<b>Gene ID</b>	9314
<b>SwissProt ID</b>	O43474
<b>Immunogen</b>	Recombinant protein of human KLF4

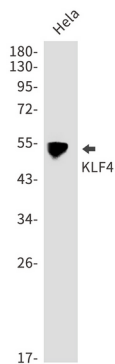
## Background

KLF4 is a member of the erythroid Kruppel-like factor (EKLF) multigene family that is highly expressed in the differentiating layers of the epidermis. KLF4 plays a critical role in the differentiation of epithelial cells and is essential for normal gastric homeostasis and function as both a repressor and activator of transcription.

## Research Area

Epigenetics and Nuclear Signaling

## Image Data



Western blot analysis of KLF4 in HeLa lysates using KLF4 antibody.