

**Product Name: PTBP1 Rabbit Polyclonal Antibody****Catalog #: APRab00345**

For research use only.

**Summary**

<b>Description</b>	Rabbit polyclonal Antibody
<b>Host</b>	Rabbit
<b>Application</b>	WB,IHC,ICC/IF
<b>Reactivity</b>	Human,Mouse,Rat
<b>Conjugation</b>	Unconjugated
<b>Modification</b>	Unmodified
<b>Isotype</b>	IgG
<b>Clonality</b>	Polyclonal
<b>Form</b>	Liquid
<b>Concentration</b>	1mg/ml
<b>Storage</b>	Aliquot and store at -20°C (valid for 12 months). Avoid freeze/thaw cycles.
<b>Shipping</b>	Ice bags
<b>Buffer</b>	Rabbit IgG in phosphate buffered saline , pH 7.4, 150mM NaCl, 0.02% sodium azide and 50% glycerol.
<b>Purification</b>	Affinity Chromatography

**Application**

<b>Dilution Ratio</b>	WB 1:500-1:1000,IHC 1:50-1:100,ICC/IF 1:50-1:200
<b>Molecular Weight</b>	Calculated MW: 57 kDa; Observed MW: 57 kDa

**Antigen Information**

<b>Gene Name</b>	PTBP1
<b>Alternative Names</b>	PTB; PTB2; PTB3; PTB4; pPTB; HNRPI; PTB-1; PTB-T; HNRNPI; HNRNP-I
<b>Gene ID</b>	5725
<b>SwissProt ID</b>	P26599
<b>Immunogen</b>	A synthetic peptide of human PTBP1

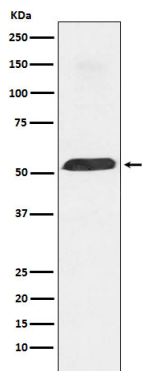
**Background**

Plays a role in pre-mRNA splicing and in the regulation of alternative splicing events. Binds to the polypyrimidine tract of introns. May promote RNA looping when bound to two separate polypyrimidine tracts in the same pre-mRNA.

## Research Area

Epigenetics and Nuclear Signaling

## Image Data



Western blot analysis of PTBP1 in Daudi lysates using PTBP1 antibody.