
Product Name: ACTL6A Rabbit Polyclonal Antibody**Catalog #: APRab00338**

For research use only.

Summary

Description	Rabbit polyclonal Antibody
Host	Rabbit
Application	WB,IHC,ICC/IF,IP
Reactivity	Human,Mouse,Rat
Conjugation	Unconjugated
Modification	Unmodified
Isotype	IgG
Clonality	Polyclonal
Form	Liquid
Concentration	1mg/ml
Storage	Aliquot and store at -20°C (valid for 12 months). Avoid freeze/thaw cycles.
Shipping	Ice bags
Buffer	Rabbit IgG in phosphate buffered saline , pH 7.4, 150mM NaCl, 0.02% sodium azide and 50% glycerol.
Purification	Affinity Chromatography

Application

Dilution Ratio	WB 1:500-1:1000,IHC 1:50-1:100,ICC/IF 1:50-1:200,IP 1:20-1:50
Molecular Weight	Calculated MW: 47 kDa; Observed MW: 47 kDa

Antigen Information

Gene Name	ACTL6A ACTL6A; BAF53; BAF53A; INO80K; Actin-like protein 6A; 53 kDa BRG1-associated factor A;
Alternative Names	Actin-related protein Baf53a; ArpNbeta; BRG1-associated factor 53A; BAF53A; INO80 complex subunit K
Gene ID	86
SwissProt ID	O96019
Immunogen	A synthetic peptide of human ACTL6A

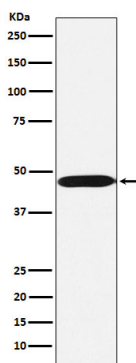
Background

Involved in transcriptional activation and repression of select genes by chromatin remodeling (alteration of DNA-nucleosome topology). Required for maximal ATPase activity of SMARCA4/BRG1/BAF190A and for association of the SMARCA4/BRG1/BAF190A containing remodeling complex BAF with chromatin/nuclear matrix.

Research Area

Signal Transduction

Image Data



Western blot analysis of ACTL6A in Ramos lysates using ACTL6A antibody.