
Product Name: Human IgD Rabbit Polyclonal Antibody**Catalog #: APRab00332**

For research use only.

Summary

| | |
|----------------------|--|
| Description | Rabbit polyclonal Antibody |
| Host | Rabbit |
| Application | WB,IHC |
| Reactivity | Human |
| Conjugation | Unconjugated |
| Modification | Unmodified |
| Isotype | IgG |
| Clonality | Polyclonal |
| Form | Liquid |
| Concentration | 1mg/ml |
| Storage | Aliquot and store at -20°C (valid for 12 months). Avoid freeze/thaw cycles. |
| Shipping | Ice bags |
| Buffer | Rabbit IgG in phosphate buffered saline , pH 7.4, 150mM NaCl, 0.02% sodium azide and 50% glycerol. |
| Purification | Affinity Chromatography |

Application

| | |
|-------------------------|--|
| Dilution Ratio | WB 1:500-1:1000,IHC 1:50-1:100 |
| Molecular Weight | Calculated MW: 42 kDa; Observed MW: 84 kDa |

Antigen Information

| | |
|--------------------------|----------------------------------|
| Gene Name | IGHD |
| Alternative Names | Ig delta chain C region |
| Gene ID | 3495.0 |
| SwissProt ID | P01880 |
| Immunogen | A synthetic peptide of human IgD |

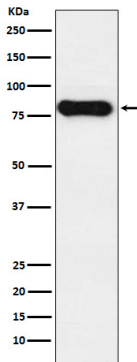
Background

There are two named isoforms of IGHG produced by alternative splicing, a secreted form and a single pass type I membrane protein.

Research Area

Immunology

Image Data



Western blot analysis of IGHD in Human tonsil lysates using Human IgD antibody.