
Product Name: DDB1 Rabbit Polyclonal Antibody**Catalog #: APRab00331**

For research use only.

Summary

Description	Rabbit polyclonal Antibody
Host	Rabbit
Application	WB,IHC,ICC/IF,IP
Reactivity	Human,Mouse,Rat
Conjugation	Unconjugated
Modification	Unmodified
Isotype	IgG
Clonality	Polyclonal
Form	Liquid
Concentration	1mg/ml
Storage	Aliquot and store at -20°C (valid for 12 months). Avoid freeze/thaw cycles.
Shipping	Ice bags
Buffer	Rabbit IgG in phosphate buffered saline , pH 7.4, 150mM NaCl, 0.02% sodium azide and 50% glycerol.
Purification	Affinity Chromatography

Application

Dilution Ratio	WB 1:500-1:1000,IHC 1:50-1:100,ICC/IF 1:50-1:200,IP 1:20-1:50
Molecular Weight	Calculated MW: 127 kDa; Observed MW: 127 kDa

Antigen Information

Gene Name	DDB1
Alternative Names	XPE; DDBA; XAP1; XPCE; XPE-BF; UV-DDB1
Gene ID	1642
SwissProt ID	Q16531
Immunogen	A synthetic peptide of human DDB1

Background

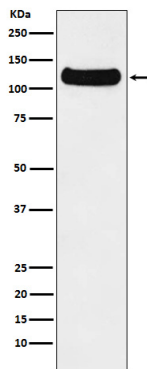
Required for DNA repair. Binds to DDB2 to form the UV-damaged DNA-binding protein complex (the UV-DDB complex). The UV-DDB complex may recognize UV-induced DNA damage and recruit proteins of the nucleotide excision repair pathway (the

NER pathway) to initiate DNA repair.

Research Area

Epigenetics and Nuclear Signaling

Image Data



Western blot analysis of DDB1 in HeLa lysates using DDB1 antibody.