
Product Name: Glycophorin C Rabbit Polyclonal Antibody**Catalog #: APRab00329**

For research use only.

Summary

Description	Rabbit polyclonal Antibody
Host	Rabbit
Application	WB,IHC,ICC/IF,FC,IP
Reactivity	Human
Conjugation	Unconjugated
Modification	Unmodified
Isotype	IgG
Clonality	Polyclonal
Form	Liquid
Concentration	1mg/ml
Storage	Aliquot and store at -20°C (valid for 12 months). Avoid freeze/thaw cycles.
Shipping	Ice bags
Buffer	Rabbit IgG in phosphate buffered saline , pH 7.4, 150mM NaCl, 0.02% sodium azide and 50% glycerol.
Purification	Affinity Chromatography

Application

Dilution Ratio	WB 1:500-1:1000,IHC 1:50-1:100,ICC/IF 1:50-1:200,FC 1:50-1:100,IP 1:20-1:50
Molecular Weight	Calculated MW: 14 kDa; Observed MW: 39 kDa

Antigen Information

Gene Name	GYPC
Alternative Names	GYPC; CD236; CD236R; GE; GPC; GYPD
Gene ID	2995
SwissProt ID	P04921
Immunogen	A synthetic peptide of human Glycophorin C

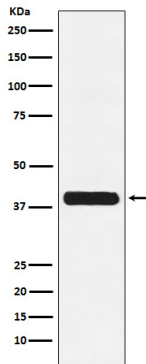
Background

This protein is a minor sialoglycoprotein in human erythrocyte membranes. The blood group Gerbich antigens and receptors for Plasmodium falciparum merozoites are most likely located within the extracellular domain.

Research Area

Cardiovascular

Image Data



Western blot analysis of Glycophorin C in K562 lysates using Glycophorin C antibody.