
Product Name: Creatine Kinase B type Rabbit Polyclonal Antibody**Catalog #: APRab00328**

For research use only.

Summary

Description	Rabbit polyclonal Antibody
Host	Rabbit
Application	WB,IHC,ICC/IF,FC,IP
Reactivity	Human,Mouse,Rat
Conjugation	Unconjugated
Modification	Unmodified
Isotype	IgG
Clonality	Polyclonal
Form	Liquid
Concentration	1mg/ml
Storage	Aliquot and store at -20°C (valid for 12 months). Avoid freeze/thaw cycles.
Shipping	Ice bags
Buffer	Rabbit IgG in phosphate buffered saline , pH 7.4, 150mM NaCl, 0.02% sodium azide and 50% glycerol.
Purification	Affinity Chromatography

Application

Dilution Ratio	WB 1:500-1:1000,IHC 1:50-1:100,ICC/IF 1:50-1:200,FC 1:50-1:100,IP 1:20-1:50
Molecular Weight	Calculated MW: 43 kDa; Observed MW: 43 kDa

Antigen Information

Gene Name	CKB
Alternative Names	BCK; Ckb; CKBB; HEL 211; HEL S 29
Gene ID	1152
SwissProt ID	P12277
Immunogen	A synthetic peptide of human Creatine kinase B type

Background

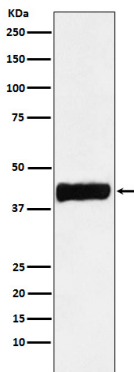
Reversibly catalyzes the transfer of phosphate between ATP and various phosphogens (e.g. creatine phosphate). Creatine kinase isoenzymes play a central role in energy transduction in tissues with large, fluctuating energy demands, such as skeletal

muscle, heart, brain and spermatozoa.

Research Area

Neuroscience

Image Data



Western blot analysis of Creatine kinase B type in SH-SY5Y lysates using Creatine Kinase B type antibody.