

---

**Product Name: LIS1 Rabbit Polyclonal Antibody****Catalog #: APRab00327**

For research use only.

**Summary**

<b>Description</b>	Rabbit polyclonal Antibody
<b>Host</b>	Rabbit
<b>Application</b>	WB
<b>Reactivity</b>	Human, Mouse, Rat
<b>Conjugation</b>	Unconjugated
<b>Modification</b>	Unmodified
<b>Isotype</b>	IgG
<b>Clonality</b>	Polyclonal
<b>Form</b>	Liquid
<b>Concentration</b>	1mg/ml
<b>Storage</b>	Aliquot and store at -20°C (valid for 12 months). Avoid freeze/thaw cycles.
<b>Shipping</b>	Ice bags
<b>Buffer</b>	Rabbit IgG in phosphate buffered saline , pH 7.4, 150mM NaCl, 0.02% sodium azide and 50% glycerol.
<b>Purification</b>	Affinity Chromatography

**Application**

<b>Dilution Ratio</b>	WB 1:500-1:1000
<b>Molecular Weight</b>	Calculated MW: 47 kDa; Observed MW: 47 kDa

**Antigen Information**

<b>Gene Name</b>	PAFAH1B1
<b>Alternative Names</b>	MDS; LIS1; LIS2; MDCR; NudF; PAFAH
<b>Gene ID</b>	5048
<b>SwissProt ID</b>	P43034
<b>Immunogen</b>	A synthetic peptide of human LIS1

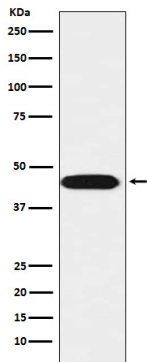
**Background**

Required for proper activation of Rho GTPases and actin polymerization at the leading edge of locomoting cerebellar neurons and postmigratory hippocampal neurons in response to calcium influx triggered via NMDA receptors.

## Research Area

Neuroscience

## Image Data



Western blot analysis of LIS1 in SH-SY5Y lysates using LIS1 antibody.