

**Product Name: Geminin Rabbit Polyclonal Antibody****Catalog #: APRab00322**

For research use only.

**Summary**

<b>Description</b>	Rabbit polyclonal Antibody
<b>Host</b>	Rabbit
<b>Application</b>	WB,IHC,ICC/IF
<b>Reactivity</b>	Human
<b>Conjugation</b>	Unconjugated
<b>Modification</b>	Unmodified
<b>Isotype</b>	IgG
<b>Clonality</b>	Polyclonal
<b>Form</b>	Liquid
<b>Concentration</b>	1mg/ml
<b>Storage</b>	Aliquot and store at -20°C (valid for 12 months). Avoid freeze/thaw cycles.
<b>Shipping</b>	Ice bags
<b>Buffer</b>	Rabbit IgG in phosphate buffered saline , pH 7.4, 150mM NaCl, 0.02% sodium azide and 50% glycerol.
<b>Purification</b>	Affinity Chromatography

**Application**

<b>Dilution Ratio</b>	WB 1:500-1:1000,IHC 1:50-1:100,ICC/IF 1:50-1:200
<b>Molecular Weight</b>	Calculated MW: 24 kDa; Observed MW: 30 kDa

**Antigen Information**

<b>Gene Name</b>	GMNN
<b>Alternative Names</b>	Gem; Geminin; GMNN
<b>Gene ID</b>	51053
<b>SwissProt ID</b>	O75496
<b>Immunogen</b>	Recombinant protein of human Geminin

**Background**

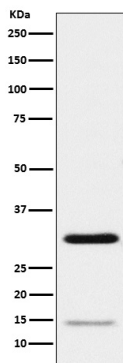
Inhibits DNA replication by preventing the incorporation of MCM complex into prereplication complex (pre-RC). It is degraded during the mitotic phase of the cell cycle. Its destruction at the metaphase-anaphase transition permits replication in the

succeeding cell cycle.

## Research Area

Epigenetics and Nuclear Signaling

## Image Data



Western blot analysis of Geminin in HeLa lysates using Geminin antibody.