

---

**Product Name: SET Rabbit Polyclonal Antibody****Catalog #: APRab00317**

For research use only.

**Summary**

|                      |  |
|----------------------|--|
| <b>Description</b>   | Rabbit polyclonal Antibody   |
| <b>Host</b>          | Rabbit   |
| <b>Application</b>   | WB,IHC,ICC/IF,FC,IP  |
| <b>Reactivity</b>    | Human,Mouse,Rat  |
| <b>Conjugation</b>   | Unconjugated   |
| <b>Modification</b>  | Unmodified   |
| <b>Isotype</b>       | IgG  |
| <b>Clonality</b>     | Polyclonal   |
| <b>Form</b>          | Liquid   |
| <b>Concentration</b> | 1mg/ml   |
| <b>Storage</b>       | Aliquot and store at -20°C (valid for 12 months). Avoid freeze/thaw cycles.                        |
| <b>Shipping</b>      | Ice bags   |
| <b>Buffer</b>        | Rabbit IgG in phosphate buffered saline , pH 7.4, 150mM NaCl, 0.02% sodium azide and 50% glycerol. |
| <b>Purification</b>  | Affinity Chromatography  |

**Application**

|                         |   |
|-------------------------|---|
| <b>Dilution Ratio</b>   | WB 1:500-1:1000,IHC 1:50-1:100,ICC/IF 1:50-1:200,FC 1:50-1:100,IP 1:20-1:50 |
| <b>Molecular Weight</b> | Calculated MW: 33 kDa; Observed MW: 39 kDa                                  |

**Antigen Information**

|                          |  |
|--------------------------|--|
| <b>Gene Name</b>         | SET  |
| <b>Alternative Names</b> | 2PP2A; IGAAD; TAF-I; I2PP2A; IPP2A2; PHAPII; TAF-IBETA |
| <b>Gene ID</b>           | 6418   |
| <b>SwissProt ID</b>      | Q01105   |
| <b>Immunogen</b>         | A synthetic peptide of human SET                       |

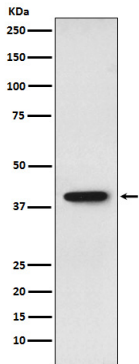
**Background**

Multitasking protein, involved in apoptosis, transcription, nucleosome assembly and histone binding. Isoform 2 anti-apoptotic activity is mediated by inhibition of the GZMA-activated DNase, NME1.

## Research Area

Immunology

## Image Data



Western blot analysis of SET in HepG2 lysates using SET antibody.