

---

**Product Name: IGFBP7 Rabbit Polyclonal Antibody****Catalog #: APRab00315**

For research use only.

**Summary**

<b>Description</b>	Rabbit polyclonal Antibody
<b>Host</b>	Rabbit
<b>Application</b>	WB,IHC,ICC/IF,FC
<b>Reactivity</b>	Human,Mouse,Rat
<b>Conjugation</b>	Unconjugated
<b>Modification</b>	Unmodified
<b>Isotype</b>	IgG
<b>Clonality</b>	Polyclonal
<b>Form</b>	Liquid
<b>Concentration</b>	1mg/ml
<b>Storage</b>	Aliquot and store at -20°C (valid for 12 months). Avoid freeze/thaw cycles.
<b>Shipping</b>	Ice bags
<b>Buffer</b>	Rabbit IgG in phosphate buffered saline , pH 7.4, 150mM NaCl, 0.02% sodium azide and 50% glycerol.
<b>Purification</b>	Affinity Chromatography

**Application**

<b>Dilution Ratio</b>	WB 1:500-1:1000,IHC 1:50-1:100,ICC/IF 1:50-1:200,FC 1:50-1:100
<b>Molecular Weight</b>	Calculated MW: 29 kDa; Observed MW: 29 kDa

**Antigen Information**

<b>Gene Name</b>	IGFBP7 IGFBP7; MAC25; PSF; Insulin-like growth factor-binding protein 7; IBP-7; IGF-binding protein
<b>Alternative Names</b>	7; IGFBP-7; IGFBP-rP1; MAC25 protein; PGI2-stimulating factor; Prostacyclin-stimulating factor; Tumor-derived adhesion factor; TAF
<b>Gene ID</b>	3490
<b>SwissProt ID</b>	Q16270
<b>Immunogen</b>	A synthetic peptide of human IGFBP7

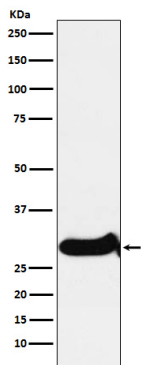
**Background**

Binds IGF-I and IGF-II with a relatively low affinity. Stimulates prostacyclin (PGI<sub>2</sub>) production. Stimulates cell adhesion.

## Research Area

Signal Transduction

## Image Data



Western blot analysis of IGFBP7 in SW480 lysates using IGFBP7 antibody.